



THE BAPTIST MESSAGE

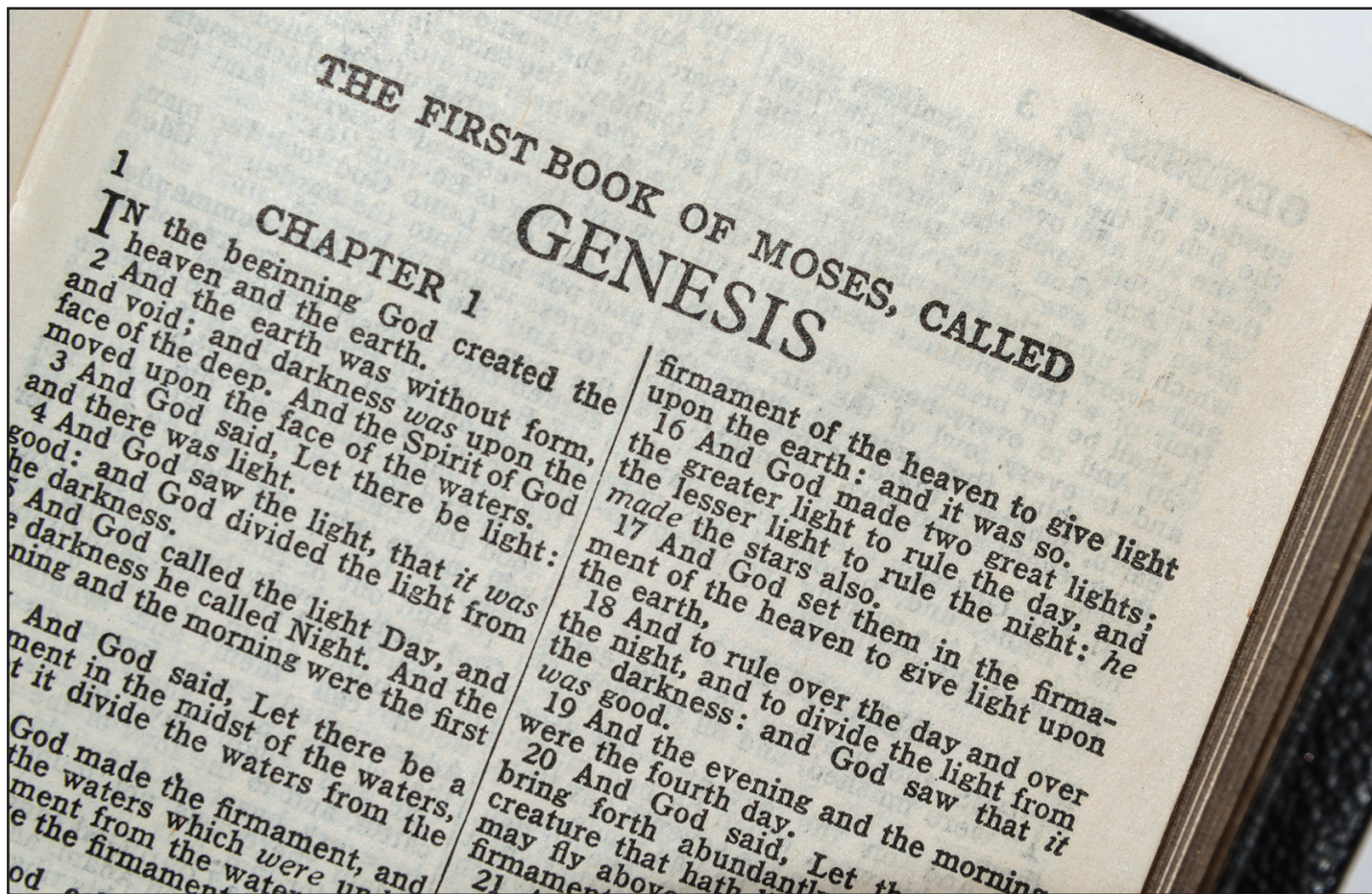
John 3:16

Share the Message

www.baptistmessage.com

January 29, 2026
Volume 141 • Issue No. 1

TO REPORT A
NEWS ITEM
OR TO BUY
AN AD, CALL
877.234.3832



Submitted photo

APOLOGETICS 101 (Part 1):

Evidence proves the Word from the beginning

By Will Hall

Message executive editor

This is the first installment of a 12-part series about evidence that the Bible is truth.

ALEXANDRIA, La. (LBM) – There are two essential truths that undergird all Christian beliefs: you can place your full faith and trust in Jesus and you can place your full faith and trust in His Word.

Indeed, the Bible declares, “In the beginning was the Word, and the Word was with God, and the



Word was God,” (John 1:1). So, the integrity of the Word and that of the Person of Jesus are insepara-

ble. For those of us who believe, the power and truthfulness of the Word is revealed to us through our personal relationship with the Holy Spirit who was there at the beginning of creation (Genesis 1:1-2), but also is here now to dwell in us; testify to us about Jesus; convict us of sin, righteousness, and judgment; and speak truth to us, glorify Jesus and declare Him to us (John 14:16-18; 15:26-27; 16:7-15).

Still, we are called to “always be ready to give a defense to

See APOLOGETICS, page 14

2025: LBC baptisms continue 5-year upward trend

By Staff

Baptist Message

ALEXANDRIA, La. (LBM) – Preliminary data for 2025 show that Louisiana Baptists’ baptisms continued to increase for the fifth straight year to

8,737, the largest number since 2018.

This unofficial total reflects 76.9 percent of congregations reporting (1,143), 92 fewer than in 2024 (1,235) when 83.4 percent of churches submitted Annual Church Profile

surveys.

Baptism summary, 2018-2025: 8,737 (2025), 8,415 (2024), 8,331 (2023), 6,686 (2022), 5,634 (2021), 5,616 (2020), 6,951 (2019), 8,840 (2018).

See BAPTISMS, page 16

Baptist Message to go ‘digital only’ in 2027

By Will Hall

Message executive editor

ALEXANDRIA, La. (LBM) – The Baptist Message, Louisiana Baptists’ news service, will continue publishing a print edition through December 2026, then begin digital-only operations in January 2027.

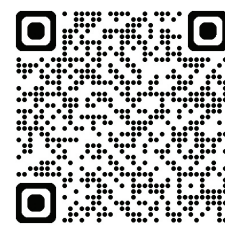
The transition from a print product has been studied since 2024, according to Will Hall, the Baptist Message executive editor.

“I conducted a Nehemiah Walk of our operations as well as looked at other Baptist newspapers around the country to better understand how to move forward with our ministry,” he said, noting that he also looked at generational trends in how individuals prefer to receive their news.

“I also looked at various ways to structure a financial model that works for continuing the Baptist Message into the future,” Hall said.

Finances are a considerable factor in the decision because the news service expects a \$100,000 drop in revenue after 2026.

Hall said the shortfall would



Point your smartphone camera at this QR code and click on the link that appears to access the special features of the Baptist Message online.

Send Network Louisiana celebrates 2025 results

By Brian Blackwell
Message staff writer

ALEXANDRIA, La. (LBM) – Send Network Louisiana reported a bountiful Gospel harvest in 2025, with

21 new churches planted and 395 new believers baptized.

“We’re grateful to God for another great year,” Send Network Louisiana Director Lane Corley told the Baptist Message. “That includes new

brothers and sisters in Christ and new congregations engaging the lost in our cities and towns.”

BACKGROUND

The partnership with the North American Mission Board, which went into effect Aug. 1, 2023, has helped the state further its God-sized vision to see His Kingdom expanded in Louisiana by one percent (28,875 new believers) over the next decade.

Researchers estimate that about 62 percent of roughly 4,589,000 Louisianans are lost. If successful, nearly 29,000 Louisianans will be added to the Kingdom through 231 new churches planted in the state by 2033 (based on each reaching 125 people with the Gospel).

BOUNTY

Of the 21 new churches planted this year, 11 are in southeast Louisiana, eight are in north Louisiana and two are in southwest Louisiana. Corley noted that

50 percent of Louisiana’s population is in southeast Louisiana, along with the two largest and most diverse metropolitan areas (New Orleans and Baton Rouge).

The partnership has resulted in 41 new church plants. Another 16 were planted prior to the agreement between Louisiana Baptists and the North American Mission Board and still receive Cooperative Program funding. Collectively, these 57 church plants have reported 1,115 baptisms and more than 8,000 Gospel conversations.

With nearly 2.9 million people without Christ in the state, Corley said church planting and replanting must be a priority for Louisiana Baptists moving forward.

“Church planting is evangelism that leads to a new church,” he said. “I’m grateful for the partnership between Louisiana Baptists, the North American Mission Board and our local associations that is seeing constant fruit across our state.”

AND BEYOND

Corley said 2026 already is looking bright, noting that

32 church planting candidates are in the pipeline to be assessed.

The goal of planting 20 new churches next year can be reached, Corley said, by Louisiana Baptists helping in several ways:

— continue to cooperate with the Southern Baptist Convention through missions giving;

— become a supporting church and adopt a church plant for strategic prayer, a mission trip, support for the planting couple or financial support;

— become a sending church (take responsibility for a new church or replant); and

— participate in the Serve Tour, Aug. 21-22, 2026, in the Monroe-West Monroe area (Teams will have the chance to share Christ’s love through light construction, painting, landscaping, block parties and other acts of kindness. Corley asks Louisiana Baptists to pray and to bring a team. More details will be shared in the coming months.)

For more information, visit SendNetworkLouisiana.com.

Join Our Team

COTTAGE PARENTS

(Positions available in Monroe)

SOCIAL WORKER

LMSW REQUIRED

(Position available in Monroe)

Send resume to: Cindy Smith at csmith@lbch.org or LBCH, PO Box 4196, Monroe, LA 71211.

ASSOCIATE DIRECTOR OF FAMILY SERVICES

(Position available in Monroe)

Send resume to: Perry Hancock at phancock@lbch.org or LBCH, PO Box 4196, Monroe, LA 71211.



lbch.org

Licensed Contractor

JAMES L. DAVIS CONSTRUCTION LLC

146 Redemption Ln
Ruston, LA 71270

WE FEATURE:

- new church construction,
- church remodel/additions,
- plans and design,
- conventional construction
- steel building construction

318.202.3691 Office & Fax | 318.243.3330 | james@jamesldavisconstruction.com

INSURANCE FOR CHURCHES

Since 1916

Spengler-Stewart
agency, inc.

105+ YEARS
Serving the Insurance Needs of Louisiana

Call 318.442.0269

lardoin@spenglerstewart.com

sdarbonne@spenglerstewart.com

www.spenglerstewart.com

Lori Ardoin & Shelly Cooper

LOUISIANA BAPTIST MESSAGE

Will Hall, Editor

STAFF

Philip Timothy
Managing Editor

Brian Blackwell
Staff Writer

JoAnne Timothy
Office Manager/Advertising Director

Board of Trustees:

Dan Cooksey, Dan Lay, Chuck Lowman, Chad King, Frank McCormack, Alan Miller, Darryl Miller, Jonie Owens, Tammy Sharp, Nicole Tull, Woods Watson.

ADVERTISING

Display [boxed] and classified [words only] advertising must be in writing, and may be submitted by email, U.S. mail or fax.

To the best of our knowledge, all ads in the *Louisiana Baptist Message* represent legitimate companies and offerings. However, one should always exercise normal business caution in responding to ads.

For all your advertising needs contact Rhonda Havens at the *Message* at 318.449.4351 or 877.234.3832.

The Louisiana Baptist Message partners with:



© Copyright 2026 Baptist Message. All rights reserved

SUBSCRIPTIONS:

Individual: \$14/year

Group rates available

Call the

Louisiana Baptist Message

at 318.449.4343 or 877.234.3832

Fax: 318-445-8328

editor@baptistmessage.com

PO Box 311

Alexandria LA 71309

www.baptistmessage.com

CHANGE OF ADDRESS

Two weeks before change is desired, send new address (with zip code and street address) and mailing label from this copy of the *Louisiana Baptist Message*. Periodicals postage paid in Alexandria, Louisiana, and additional mailing offices.

POSTMASTER: Send address changes to the Baptist Message, 1250 MacArthur Drive, PO Box 311, Alexandria LA 71309-0311

(USPS 042-860) (ISSN 0740-2104)

Published biweekly Thursdays by the *Louisiana Baptist Message*, 1250 MacArthur Drive, Alexandria, Louisiana 71303.

Volume 141

January 29, 2026

Number 1

From the Board & Staff of the
Louisiana Baptist Foundation

Thank you

LOUISIANA
BAPTISTS

for your partnership in ministry.

\$300+ Million* in managed assets
to help advance the Kingdom

one dollar at a time,
one ministry at a time,
one life at a time.

Managed assets are impacting the Kingdom through:

Helping churches and other
ministries earn more money on their
savings to accomplish God's work.

Helping donors to facilitate
special gifts to benefit churches
and other ministries.

Managing endowments
and other charitable arrangements
that will have a long-term benefit.



LOUISIANA
BAPTIST
FOUNDATION

Jessica Willie
Ben Stewart Melinda Robinson
Wendell Whitson
Steve Horn Doug On
Leah Mayaux
Charles Mott Ogy Alan Russell
Chris Holloway Kim Deville
Tara Gardner Kay Fleming Delana Waller
Jami Willis Lucy Tranks
Elizabeth McGrath

LBFinfo.org
318-445-4495
contact@LBFinfo.org

f X in @

*as of 12/31/2025

RAs saw growth in 2025

By Brian Blackwell
 Message staff writer

ALEXANDRIA, La. (LBM) – Royal Ambassadors in the state experienced growth in 2025, and state leaders say the ministry is poised for another banner year.

Attendance at the annual Survivor Camp saw its highest attendance since before COVID, and additional chapters were added. Additionally, Callen Breaux, a sixth grader from Temple Baptist Church in Ruston, won the national Royal Ambassador Pinewood Derby during the 2025 Southern Baptist Convention Annual Meeting in Dallas, the second consecutive year the winner was an RA from Louisiana.

Louisiana Baptist RA Consultant Steven Ancelet said he has witnessed

first-hand how RAs has positively impacted boys to grow into Christ-like young men.

“It has shaped their world view and what they can do to spread the Gospel,” Ancelet told the Baptist Message. “It seems that ministers and church staff are seeing the value in RAs also. Some churches have moved away from RAs in recent years and are now returning to it.

“The special thing about RAs that separates it from other biblically based training for boys is that RAs has a mission focus,” he continued. “These boys understand that they can make a difference in the world through missions work.”

RISING INTEREST

Two RA camps drew record crowds last year.

RA Congress, held April 4-5 at Tall Timbers Baptist Conference Center in Woodworth, drew 115 participants.

Meanwhile, a Sept. 5-6 event hosted by the Acadian Baptist Center in Eunice registered 173 attendees, the highest number since before COVID. Moreover, 14 boys and three dads gave their lives to Christ.

Ancelet, a member of First Baptist Church, Lafayette, was involved with RAs at the church alongside with Hartie Spence Jr., long-time director of Survivor Camp who lost his life in a glider crash near Salt Lake City Utah, on Aug. 1. Ancelet said leaders like Spence have been instrumental in shaping the lives of young men and helping the organization to grow statewide.

“We have contacted



WMU photo

The 2025 national Royal Ambassador Pinewood Derby was won by Callen Breaux, a sixth grader with Temple Baptist Church in Ruston.

many churches in 2025 concerning RAs and there have been many comments about how Spence inspired them or helped them,” Ancelet said. “We want to carry some momentum and excitement into 2026 about RAs.”

In addition to camps, Ancelet knows of at least

five churches in the state who are interested in starting, or restarting, RA groups in their churches.

“The state is ready, willing and able to help them get a successful RA program up and running,” he said. “This would bring

See RAs, page 10

Who's Your One in a Million?

Join us to mobilize 1 million people in prayer and evangelism. Be one in a million to reach one of a million.

Text ONE to 888-123 to commit to pray for your one.

Msg frequency varies. Reply STOP to cancel, HELP for help. Msg & data rates may apply. Terms & privacy: slktxt.io/YvLo

Who's Your ONE?

OR

Scan this QR Code to visit

whosyourone.com

Prayer fuels growth at FBC Converse

By **Brian Blackwell**
Message staff writer

CONVERSE, La. (LBM) – Logan Cox has excelled in many areas of life as an eighth grader, but they pale in comparison to a decision made at an early October revival service during Youth Night at First Baptist Church, Converse.

“I realized that this could be my last chance, so I accepted Jesus into my heart,” Cox, who followed with baptism on Oct. 19, told the Baptist Message. “It is the best decision I have ever made. Being saved feels like being lost then found, a feeling of relief, feeling loved, having a purpose to live for and knowing that you will spend eternity with God. Doing this will give you peace and set you free.”

“My youth leader Ashlyn has taught me to come out of my shell and to let Jesus in and to not be ashamed to say I am saved,” he continued. “I wasn’t ashamed to know God, I was just nervous to make a public decision and

with Ashlyn talking to me at youth night it made me realize that God is the only one who matters.”

Baptisms of students like Cox have not been the exception but the norm recently at FBC Converse.

Since 2022, 70 new converts – many who are youth – have stirred the baptistery waters there. The baptisms have reflected growth in Sunday morning worship services, expanding from 60 in 2022 to 140 now.

Pastor Brian Rankin said the congregation’s spirit of prayer and desire to reach others for Christ drew him to accept the call at FBC Converse in February 2022.

“It has been a church wide effort of inviting family and friends and telling others what God is doing in our lives,” Rankin said. “It started with our youth and quickly spread to others. And what is happening here is a move of God.”

“It’s really unexplainable,” he continued. “It’s a blessing and I look forward to see what God is going to

do each time we meet.”

HOUSE OF PRAYER

Prayer is a spiritual discipline the congregation does not take lightly.

After attending a District 8 Baptist Convention meeting at Clara Springs Baptist Camp in January, Rankin felt led for two months to focus on prayer during Wednesday evening gatherings. Rankin shared Bible verses about prayer in the meetings, and a month before a church-wide revival (held Sept. 28-Oct. 1) the church met for prayer meetings in homes.

The result was 19 baptisms and other decisions to grow closer to the Lord.

Since Ashlyn Williams became the student ministry leader in September 2022, she has seen attendance on Wednesday evenings increase from four to 40 students.

The group has been impacted by tragedies,



Since 2022, 70 new converts – many who are youth – have been baptized by First Baptist Church, Converse. The baptisms have reflected growth in Sunday worship services, expanding from 60 in 2022 to 140 now.

including a student killed in a car accident and another passing away from a rare illness in 2025, which led to many more students attending church and turning to Jesus. The youth are actively serving in various ministries such as door greeting, assisting in children’s church and working the sound system,

demonstrating a strong bond and commitment to the church.

“I tell people all the time that I feel like if you tell them to become involved in the church one day and that they’ll be able to impact the church when they’re older, they

See **CONVERSE**, page 11



Quartet singing
at it’s best!

February 21, 2026
6 p.m.

Riverview Baptist Church
8709 Hwy 1 S, Alexandria, La.

A love offering will be received
For more information call 318-613-6505

GUARDIANSQUARTET.COM

facebook.com/TheGuardiansOnline

instagram.com/theguardiansmusic

AMERICA’S #1 CHURCH BUS DEALER!

**EXCLUSIVE
8 YEAR
UNLIMITED MILE
CHURCH
WARRANTY!**



**DOWNLOAD OUR EXCLUSIVE
CHURCH BUS PRICE LIST!**
SCAN THE QR CODE NOW!

CarpenterBus.com

Carpenter
BUS SALES

IN BUSINESS SINCE 1953

Lake Church brings freedom of Christ to community

By Brian Blackwell
Message staff writer

PRAIRIEVILLE, La. (LBM) – Lake Martin Baptist Church was on the verge of closing when they approached Jarrett Wells about replanting the church in June 2024. The once-vibrant congregation had dwindled to just seven members and felt Wells could help them better reach the community and ensure the church’s survival for many years to come. After several meetings and much prayer, the diminished Lake Martin Baptist Church congregation voted to merge with a group that was meeting in Wells’ home for Bible study and committed to start a fresh Gospel work

in the Lake Martin community. “The heart of Lake Church is to bring the true freedom of Christ to this community, as well as show them that there is a church here that is really wanting to impact the community through the love of Christ,” Wells told the Baptist Message. “This is a story of two different groups of people going down two different paths that God brought together for one main purpose.”

CALLED TO PLANT

Wells, who previously pastored Oakview Baptist Church, Livingston, for 10 years, had taken an eight-month break from his role and in August of 2023

began hosting a Sunday morning Bible study in his home that averaged between 30 and 50. Kirk Jones, pastor of Fellowship Church in Prairieville, had befriended Wells and noticed the consistent attendance at the home-based Bible study. After asking if he would consider planting a church one day, Wells met with Jones and Send Network Louisiana Director Lane Corley to discuss those next steps. Wells then spent the next nine months completing an assessment to become an endorsed church planter. “Through that, God really confirmed and validated that I was to

See LAKE, page 11



Submitted photo

Since holding its first service on Sept. 22, 2024, Lake Church, sponsored by Fellowship Church (both in Prairieville) has averaged 150 people in worship and baptized 17 new converts.

PAUSE

A WEEKEND FOR PASTORS AND WIVES

Tall Timbers Conference Center
February 6-7, 2026

\$195/Couple



Waylon Bailey
PRESENTER



Martha Bailey
PRESENTER



Steve Horn
PRESENTER



Cullen McDaniel
WORSHIP

Learn More:
LouisianaBaptists.org/Pause





Louisiana Christian University President Mark Johnson will share a message with First Baptist Church, Bunkie, Feb. 1, on a special statewide Day of Prayer for the school.

LCU photo

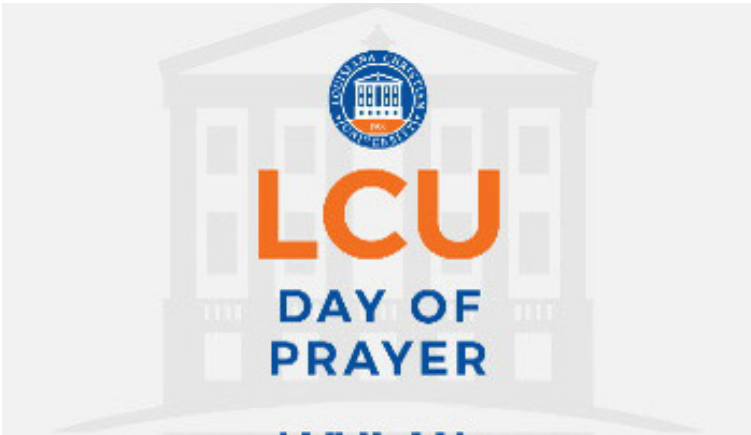
LCU Day of Prayer set for Feb. 1

By Staff
Baptist Message

PINEVILLE, La. (LBM) – As Louisiana Christian University celebrates its 120th year of ministry, Louisiana Baptists have been asked to set aside Feb. 1 as a day of prayer for the school.

Established after a vote by messengers during the 2024 Louisiana Baptist Convention Annual Meeting, the special day will focus on specific needs for strength, health and wisdom of LCU President Mark Johnson and his family; LCU’s perseverance in its mission of providing Christ-centered education; and God’s provision and favor in rebuilding enrollment, strengthening campus life, and expanding partnerships across the state.

“The Louisiana Christian University Day of



Prayer is both humbling and encouraging,” Johnson told the Baptist Message. “To know that on this day more than 1,500 Southern Baptist churches across our state are intentionally lifting up our campus, our students, our faculty and staff, and our mission before the Lord is a powerful reminder that LCU does not stand alone.

“As we celebrate our 120th anniversary this

year, we are mindful of generations of Southern Baptists, who prayed for generations they would never meet and futures they would never see,” he continued. “In this season of renewal and growth, those prayers strengthen us, guide us and inspire us to remain faithful to our calling.”

Download a flyer and video by visiting louisianabaptists.org/lcu-day-of-prayer.

Invest with purpose. Impact the Kingdom.



Church Finance CORPORATION

Increase the resources God has entrusted to you while providing funds for churches to further Kingdom work.

Offering Circular

churchfinancem.org/investments/
1.877.841.1777
info@churchfinancem.org



*Rates are subject to change. The Louisiana Baptist Foundation is not soliciting funds but is endorsing its ministry partner Church Finance Corporation in providing investments for individuals.



LOUISIANA BAPTIST FOUNDATION

LBInfo.org
318.445.4495
contact@LBInfo.org

Sullivan named University of Louisiana Lafayette BCM director

By Staff

Louisiana Baptist Mes-

LAFAYETTE, La. (LBM) – Cas Sullivan, director of the Texas Wesleyan University Baptist Student Ministry, has been named to the same role with the University of Louisiana at Lafayette.

“My goal and aim at ULL is to help students love God, serve our campus and then reach the world for Christ,” Sullivan told the Baptist Message. “I am very excited to be back in my home state of Louisiana to serve the UL BCM.

“This is where I found my faith and where God first called me to college ministry,” he continued. “I am excited to give back in the same way that Louisiana Baptists invested in me during my formative years as a college student.”

Sullivan, who will start on Feb. 16, accepted Christ while as a student at Riverdale Academy in Coushatta. He later graduated from Calvary Baptist Academy in Shreveport and was called to ministry during his time as a



Cas Sullivan, his wife, Kayla, and two children, Ella and Emmie, are set to begin a new chapter in their spiritual journey. Cas will assume the role of Baptist Collegiate Ministry director with University of Louisiana at Lafayette on Feb. 16.

member of the Louisiana Tech BCM.

Louisiana Baptist Collegiate Ministry State Director Mark Robinson said Sullivan and his wife, Kayla (who previously served as associate BCM director with the University of Louisiana at Monroe) bring to ULL a deep love

for students and proven heart for collegiate ministry.

“Cas brings a rich blend of ministry experience and leadership gifting,” Robinson said. “He has a strong background in local church leadership and previously served on BCM staff at Louisiana Tech University. He is

currently the BSM Director at Texas Wesleyan University, where he has built a thriving ministry without a BCM

building, driven by strong on campus evangelism, relational outreach and student discipleship.”

ACADIAN BAPTIST CENTER

Senior Adult Luncheon

come join us to learn about edible plants with

DR. CHARLES ALLEN

Author of: Edible Plants of the Gulf South

Tuesday, April 14, 2026

Registration 10:00am

Begins at 10:30 am

Concludes with lunch

no charge - love offering accepted for ABC
1202 Academy Road
Eunice LA 70535

RSVP: 337-457-9047



“For what nation is there so great who has a God so near to them, as is the word our God whenever we call upon Him?
And what nation is there so great that has statutes and judgments so righteous as all this law, which I set before you this day?”
-Moses in Deuteronomy 4:7-8

NUGENTAVL

AUDIO VIDEO LIGHTING AUTOMATION

LOUISIANA'S CHOICE FOR TECHNOLOGY IN THE CHURCH

Transforming churches with tailored AV solutions, including live streaming and professional training for your team.

192 Pinegrove Ave.
Pineville, LA 71360

844-4NUGENT
844-468-4368

nugentavl.com
sales@nugentavl.com



'Love thy neighbor' spurs growth for FBC New Roads

By Brian Blackwell
Message staff writer

NEW ROADS, La. (LBM) – An emphasis on “out of the box” outreach has helped bring about substantial growth at First Baptist Church, New Roads.

Since Jeff Vincent became pastor in February 2021, the church has seen Sunday worship attendance surge from 75 in early 2021 to 220 in early August.

“These crazy people were hungry for a crazy pastor like me, and I’ve been hungry for a crazy people like them,” Vincent told the Baptist Message. “I feel like God has knit our hearts together with this community. Our church has caught onto a vision that is living the love of Jesus.

“It’s an honor to be a

part a church that loves like First Baptist New Roads,” he continued. “They love hard, and their love is so genuine.”

Vincent’s son, Jesse, 13, was among 10 youngsters ages 11-18 who celebrated life in Christ through baptism on July 20. Jesse and four others made decisions to follow Christ during the church’s Vacation Bible School, held the previous week while the other five turned to Jesus during summer camp and other events geared toward students.

“It was wild just to see his response to the Gospel and seeing the joy in his surrender to Jesus,” Vincent said. “We pray for that to happen as parents, and it was beautiful for him to respond to Jesus.”

COMMUNITY LOVE

The church has used



Members of First Baptist Church, New Roads, prayed for its team of Vacation Bible School volunteers. Since Jeff Vincent became FBCNR pastor in February 2021, the church has seen growth in Sunday worship attendance and baptisms.

multiple outreaches to reach its community.

Members started a family night on Wednesdays that features a meal; held Vacation Bible School that averaged 90 in attendance, July 14-18; put on a fall fes-

tival; held a resource fair for individuals with special needs and their families; hosted a Louisiana State University-sponsored senior adult organization for pottery; and opened up their gymnasium for bas-

ketball, football and volleyball teams to socialize.

Becky Mason, whose family joined the church in April 2024, used her love of cooking for ministry

See NEW ROADS, page 11

God Doesn't Need A Good Economy

Louisiana Baptists have partnered with Compass Financial Ministry to provide churches inspiration and resources relating to Biblical Stewardship and Financial Discipleship. See the end of the article for more information.

It is the season of resolutions and new beginnings. New goals, new tax laws, and new budgets. We're already seeing predictions about this year's economy and how to navigate it. But what about God's economy? What if 2026 was the year we decided to turn from handling money the world's way and chose to handle it God's way? Scripture is packed with over 2,350 verses about money and possessions. In fact, Jesus talked about it more than any other topic, except for the Kingdom of God.

God knows what lies ahead. He doesn't need good circumstances to provide for His people. He delights in overcoming the odds of bad situations by showing up and providing more than what is needed. So, how do we tap into this power? By drawing close to Him—in prayer, through the living Word,

and in living out His commands to love God and to love our neighbor.

As we learn God's financial principles, apply them in our life, and share what the Lord is doing, we become a financial disciple of Jesus Christ. That could mean sharing how the Lord helped you work through a financial challenge, extending generosity towards someone in need, or providing biblical counsel as the Lord opens the door. Handling finances His way means asking Him what He would have you do with what He has entrusted you and being obedient to do what He tells you to do.

Building Financial Discipleship –

Discipleship doesn't happen in one conversation or message. It's a journey that explores what it means and looks like to live

out the Christian life. Financial discipleship is a discipline built over time just like prayer, fasting, and other spiritual disciplines. This year, make a plan to build financial discipleship by refreshing your understanding, then sharing those foundational practices and teachings.

We're here to help! Louisiana Baptists and Compass Financial Ministry are partnering to offer resources and messages you can use to strengthen the life of your church and family, and counter the world's teaching about money.

To learn more about Biblical stewardship/financial discipleship, visit LouisianaBaptists.org/stewardship or contact Rhea Fix at rhea@compassfinancialministry.org.



Rhea Fix is the Executive Director for Compass Financial Ministry serving Louisiana, Arkansas, Mississippi, Oklahoma, and West Tennessee. She has more than ten years teaching financial literacy and discipleship.



RAs from page 5

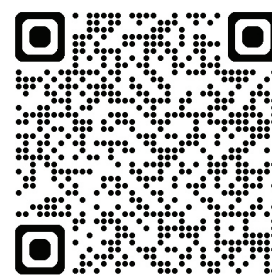
the number of churches in Louisiana with RA groups to about 30."

National RA Consultant Keith Gates, a member of

First Baptist Church, Winfield, said that Louisiana continues to have an extremely vibrant RA program. "Not only have they man-

aged to win the National RA Race two years in a row, they also have been successful in the far greater task of seeing young men make decisions for Christ," he said. "Across the Southern Baptist Convention leaders are realizing that RA provides much

needed missions education for young men as well as an opportunity for those young men to be mentored by Godly men like Steve Ancelet and Hartie Spence. We are very proud of the work that Louisiana is doing to create Ambassadors for Christ."



LOUISIANA LEGACY FAMILY & KINGDOM™

CONTENT
FOR CHURCH
PUBLICATIONS

Back to BASICS

At the start of a new year, it's natural to refocus on what matters most. We review our goals, update our calendars, and make plans for the months ahead. In the same way, it's wise to take a moment to revisit the basics of charitable giving and ensure the foundation of our generosity is strong, simple, and aligned with our faith.

As believers, we recognize that everything we have belongs to God. He entrusts us with resources not only to provide for our families but also to further His Kingdom. Being a faithful steward means understanding and using the tools available to us to give wisely and effectively. Whether you are just beginning your charitable journey or have been giving for many years, going "back to basics" can help you ensure that your giving reflects both your gratitude and your goals.

A starting point for getting back to basics is to ensure your estate plan is current and includes a charitable gift to your church or other ministries after your death. A properly planned estate can increase your impact on God's Kingdom and your family, and leave a legacy for others to imitate. Generosity isn't only for the future; we can give now as well as plan to give after our lifetime. It's important to understand how different types of assets—such as cash, investments, or IRAs—can be used now to further Kingdom work and provide you with tremendous tax benefits. If financial security is a concern, there are simple solutions to facilitate generosity while receiving income for life.

Just as no building stands without a firm foundation, no lasting plan for generosity stands without the basics in place. As you enter this new year, take time to review your giving plan and reaffirm your commitment to advancing the Kingdom through the resources God has entrusted to you.

To learn more about the basics of charitable giving, contact the Louisiana Baptist Foundation at (318) 445-4495 or email contact@LBFinfo.org.

Jared G. Price, J.D., Executive Director

JANUARY 2026 ESTATE PLANS

Including a gift in your estate plan to your church or other ministries can leave a significant impact on the Kingdom.

FEBRUARY 2026 STOCKS & IRAS

Gifts of real estate, stock, or IRAs can not only advance the Kingdom but also provide tremendous tax benefits.

MARCH 2026 INCOME-PRODUCING GIFTS

A Charitable Gift Annuity can be a great tool to ensure income for you now while also providing a gift to your church or other ministries later.



LOUISIANA
BAPTIST
FOUNDATION



Learn more: 318-445-4495 • Contact@LBFinfo.org



LAKE from page 6

a pastor again and plant a church," Wells said. "I sensed that God had been working on my heart and confirming that this is what I was called to do."

GOD-LED GROWTH

Since holding its first service on Sept. 22, 2024, Lake Church (sponsored by Fellowship Church) has averaged 150 people in worship and baptized 17 new converts.

Shari Sevario was among those baptized in February.

"Coming to Lake Church has changed my life in so many ways," she said. "It was like walking into a family of love and support. Because of their love and support in hard times, I know I have a family in Christ. I have a purpose in life. For that I am forever grateful for Lake Church and Pastor Jarrett Wells and his family."

The growth has been fueled by a loving church working together to evangelize, develop small groups and disciple others.

Paige Garrido, one of the members who has attended since Wells began holding a Bible study in his home, is grateful for the opportunities Lake Church offers its members to pour into others.

"Seeing the children get excited when they remember a memory verse or a Bible story truly fills my cup," she said. "Having a firm foundation of Christ as a young believer is so important and I am honored to be able to have a part in that. Lake Church has allowed me the opportunity to serve, and I am so grateful for them."

Moving forward, Wells prays that people will continue to find Lake Church a place where they are loved, welcomed and accepted.

"My heart is that through the ministry of Lake Church people will continue to feel refreshed by the genuine love of the body of Christ," he said. "And I pray they will be transformed by the truth of God's Word to make Him known."

CEC to equip collegians in apologetics

By Staff
Louisiana Baptist Mes-

PINEVILLE, La. (LBM) – Louisiana Baptist collegiate ministry leaders hope to equip students to discuss apologetics as well as share their faith and beliefs during the upcoming Collegiate Evangelism Conference, set for Feb. 6-7 in Louisiana Christian University's Guinn Auditorium, Pineville.

CEC 2026 will feature

three speakers: Matthew James, vice president of enrollment with New Orleans Baptist Theological Seminary; Joey Smith, pastor of Grayson Baptist Church; and Tommy Kiker, pastor of East Leesville Baptist Church.

Crescent City Worship, a collaborative team of NOBTS students, faculty, alumni and friends, will lead music.

Students will have a chance to attend break-

out sessions that center around the conference theme, as well as to ask representatives of Louisiana BCM GOLA Missions, the International Mission Board and New Orleans Baptist Theological Seminary about missions and ministry opportunities.

CEC registration begins Feb. 6 at 6 p.m. with the main session starting at 7:30 p.m. The conference concludes Feb. 7 at 5 p.m.

NEW ROADS from page 9

to those in need. Though she was hesitant to "jump in" and serve, Mason soon discovered the blessings of stepping out of her comfort zone to serve others.

"Pastor Jeff reached out to us even before we joined and asked if I wanted to cook for an event," Mason said. "From there, I began serving with others on a regular basis through cooking for and delivering meals to those in need. I have really become

bolder in praying for people and loving on them, something that I would not have done before I came to the church. They have allowed me to grow and now I couldn't imagine going anywhere else."

FORWARD MOVING

Looking forward, the church has begun expansion of its parking lot to accommodate growth and has neared completion of a Veteran's Pla-

za that will include a 24-foot cross and flagpole, as well as feature names of veterans in the church written on bricks.

"A love for military is big in our community and this Veteran's Plaza will be a big draw," Vincent said. "We don't have a name for it, but I've been calling it a tribute to sacrifice because we'll have the cross and the flag to honor our freedom spiritually and physically."

Converse from page 5

will think that there's not really a place for them now," she said. "We've really tried to let them know that they're not the church tomorrow, they're the church today and that's really ushered in this new aspect of our church where we have all these teenagers who are serving and they're doing all this great

stuff. I'm really proud of them."



LOUISIANA CHURCH INSURANCE

"Three generations of Galloway's serving Louisiana Churches."



Call us
for your church
insurance needs

www.louisianachurchinsurance.com • 800.256.0700

A RATE YOU CAN CELEBRATE

SHORT TERM FUND RATE

4.50%

CURRENT YIELD**

7X BETTER THAN A BANK SAVINGS ACCOUNT*

Increase your ministry influence with a better rate of return on your church savings.

HIGHEST RATE IN STATE FOR CHURCHES & OTHER MINISTRIES ON CASH SAVINGS**

LOUISIANA BAPTIST FOUNDATION

Learn more: 318-445-4495
contact@LBFinfo.org

*Based upon internal data.
**Rates subject to change.

Minneapolis attack on SBC church: NAMB, DOJ will ‘defend’ congregations

By Will Hall
Message Editor

ST. PAUL, Minn. (LBM) – North American Mission Board President Kevin Ezell responded Jan. 19 to the Jan. 18 attack on a Minneapolis congregation of the Southern Baptist Convention vowing to “stand with and defend our missionaries and churches.”

The threats and intimidation inside the worship center erupted only two days after President Donald J. Trump had signed a proclamation declaring Jan. 16, 2026, as “Religious Freedom Day” in the United States.

Ezell said that NAMB church planter Jonathan Parnell “was leading worship services this Sunday at Cities Church in St. Paul, Minn., when

a group of protesters forcibly disrupted worship, barging into the church building and violating the sanctuary by shouting, blowing whistles, and intentionally interrupting ongoing services.”

“This group trespassed on private property and willfully obstructed Christian worship,” he continued. “No protest—political or otherwise—justifies the desecration of a sacred space or the intimidation and trauma inflicted on families gathered peacefully in the house of God. What occurred was not a protest; it was lawless harassment.”

The U.S. Department of Justice has pledged to respond to the religious bigotry “with the full force of the law,” according to a post on X (formerly known as Twitter) by U.S. Attorney General Pam Bondi.

“If state leaders refuse to act responsibly to prevent lawlessness, this Department of Justice will remain mobilized to prosecute federal crimes and ensure that the rule of law prevails,” she said.

The attack inside the church was an escalation by agitators who have been attempting to hinder the Department of Homeland Security from arresting criminals, including rapists and murderers, who are in the country illegally. The mob justified their violation of the First Amendment rights of the congregants, alleging that one of the pastors also works for DHS.

The *Associated Press* reported that this staff member leads the Minneapolis field office of Immigrations and Customs Enforcement (ICE), painting the enforcement actions of that unit as “violent” and “illegal.”

Ezell expressed appreciation for the quick response of the DOJ’s Civil Rights Division, which he said, “already indicated that an investigation is underway,” and he called on “local and state leaders ... to ensure that order is restored and that egregious events of this nature are not permitted to happen again.”



Pastor Jonathan Parnell (right) speaks with activist Don Lemon (formerly with CNN) after a group of protestors disrupted a service Parnell, a Southern Baptist church planter, was leading at Cities Church in St. Paul, Minn., Jan. 18. Screen capture



MINISTRY PANEL DISCUSSION

FAIR/FESTIVAL MINISTRY

MARCH 12 • 1:00 PM

MEMORIAL ROOM • LOUISIANA BAPTIST BUILDING

With Louisiana having an abundance of fairs and festivals, this will be a learning opportunity on how we may engage the events around our state evangelistically. Don Lum and Rena Register have been engaged in these efforts for decades and have a vast amount of knowledge about evangelism strategies for large events. They both have successful strategies that yield fruitful results.

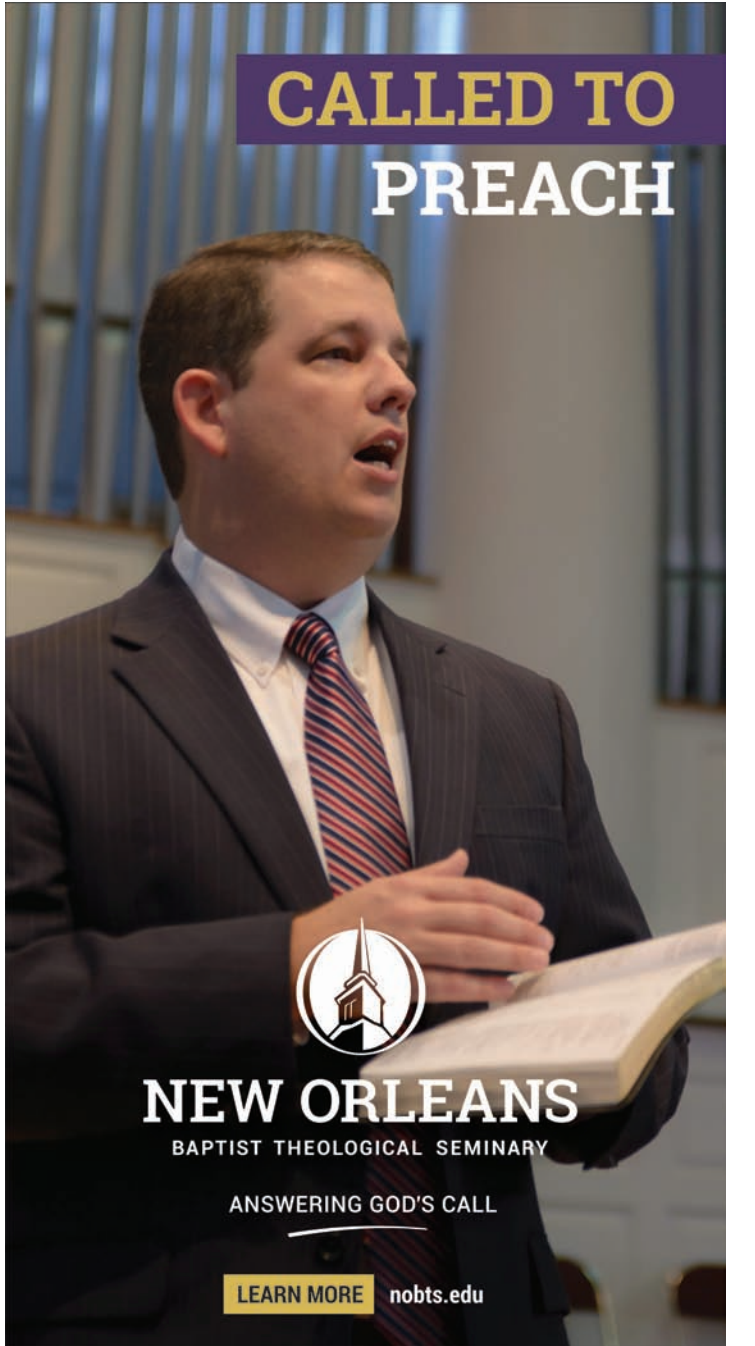


DON LUM
Director of Evangelism
for Mississippi Baptists



RENA REGISTER
Association Mission Mobilizer
for Jones County Baptist Association

 LOUISIANA BAPTISTS



CALLED TO PREACH



NEW ORLEANS
BAPTIST THEOLOGICAL SEMINARY

ANSWERING GOD'S CALL

[LEARN MORE](#) nobts.edu



DAVIS CHURCH PEW UPHOLSTERY, 4313 Hwy. 18 East Quitman, Mississippi 39355 Melton & Sandra Davis. 30-plus years experience, Family-Owned and Operated. Variety of fabrics available. Work done on-site. All Work Guaranteed. Call for estimates: 601.776.6617. If remodeling your sanctuary, please give us a call about upholstering your pews!

Call EARNEST LITTLE for pulpit supply at 318.209.8185.

Call Advertising Director JoAnne Timothy at 318.449.4343 to place your ads.

**RUBBER STAMPS
SIGNS – BADGES
SEALS – FLAGS
BRONZE PLAQUES**



Manufacturers of
MARKING DEVICES
SINCE 1867
4315 Bienville St. – New Orleans
504.525.2128

**SEEKING FULL-TIME
PASTOR**

Pisgah Baptist Church
3467 Hwy 112
Forest Hill, LA 71430
Parsonage provided.
Please email résumé to
broussards_nursery@icloud.com

Petrus
FEED & SEED

FEED / SEED / FERTILIZER
FARM / LAWN & GARDEN
SUPPLIES

2914 N Bolton Ave,
Alexandria, LA
318.443.5929 / 318.442.2325

SEEKING FULLTIME/PART-TIME

PASTOR

Bethany Baptist Church
1719 Hwy 133
Columbia, La 71418
Send resumes to
washamPEW@yahoo.com



SEEKING A FULL TIME

**YOUTH
MINISTER**

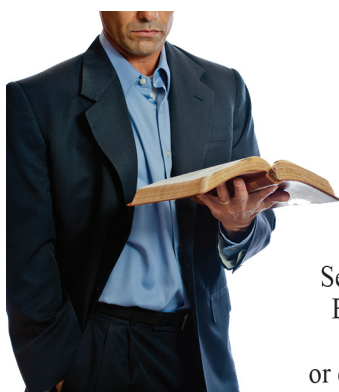
Bonita Road Baptist
Church is currently
seeking a full time
Youth minister.

Please email inquiries to
Simple7ministries@yahoo.com.



**SEEKING A
SENIOR PASTOR**

Central Baptist Church, North Little Rock, Arkansas, is seeking a senior pastor. Three years minimum senior pastor experience required; seminary experience preferred. Send résumé to cbcnlrpastorsearch@gmail.com. **DEADLINE TO APPLY: JANUARY 31, 2026!**



**SEEKING A BI-VOCATIONAL
PASTOR**

Eola Baptist Church in Bunkie, LA is seeking a bi-vocational Pastor. A parsonage is available

Send résumés to: EBC, P.O. Box 417, Bunkie, LA 71322 or email résumés to Mrobertson50@mymedia3.com or call Mike Robertson at 318.305.3613.

AFFORDABLE BEACHSIDE & BEACHFRONT VACATION CONDOS

'Absolutely lowest prices on the beach!'

Orange Beach, Alabama

RENT DIRECT FROM A CHRISTIAN FAMILY

Efficiencies - One, two, three bedrooms

www.gulfshorescondos.com

PLEASE CALL: Don at 251.752.2366



SEEKING A FULL-TIME/BI-VOCATIONAL

PASTOR

New Bethlehem Baptist Church, Denham Springs, LA is seeking a full-time/bi-vocational Pastor. Small church established 1953 with 50-100 members for Sunday service. Send résumé with links for three most recent sermons to NBBCPastorSearchCommittee25@gmail.com or mail to 37818 Reinninger Rd, Denham Springs, LA 70706. Résumés accepted through 02/20/2025.



**SEEKING A
FULL-TIME PASTOR**

Seeking a full-time Pastor
First Baptist Church Tallulah
Please send résumés to:
fbctallulah@att.net or
700 Bayou Dr.
Tallulah, LA 71282



Sandy Bayou Baptist Church
Columbia, LA 71418
is seeking a bi-vocational
Pastor. Parsonage available
as part of compensation. Send
résumés to SBBC, 4803 Hwy 559
Columbia, LA 71418 or e-mail
delaneab@yahoo.com



Seeking full-time

SENIOR PASTOR



Calvary Baptist Church in Ruston, LA is seeking a full-time senior pastor. For more information visit <https://www.calvaryruston.org/calvary-pastor-search>. Please submit résumé to cbcrustonpastorsearch@gmail.com.



magnolia
BAPTIST CHURCH

SEEKING FULL-TIME
/BI-VOCATIONAL

PASTOR

Magnolia Baptist Church in Holden, Louisiana is seeking a full-time/bi-vocational Pastor. A parsonage is included. Please send résumés to: dewayneh1965@gmail.com

**FIRST
RUSTON**

SEEKING FULL-TIME
CHILDREN'S MINISTRY LEADER

Thriving Children's Ministry of First Ruston, Ruston, La., seeking God's person to lead us to the next level. Full-time position with benefits. Please send résumé to ed@fbcruston.org.



Seeking a full-time

PASTOR



New Hope Baptist Church in Choudrant, LA is looking for a full-time pastor. If interested, please send résumé to nhbcpastorsearch26@gmail.com or call 318.768.2720.

**Family Health Insurance
at Group Rates**

GROUP, INDIVIDUAL, MEDICARE SUPPLEMENTS, DENTAL

Call or email for a free quote!!

Melvin Thomas

318.465.1006

melvinthomas46@gmail.com

411 Ashley Ridge Blvd., Shreveport, LA 71106

Apologetics

from page one

everyone who asks you a reason for the hope that is in you," (1 Peter 3:15).

Obviously, the best defense we can give to anyone is the testimony of the Word through our transformed lives (exhibiting hope through Christ in us). Yet, there are times we need to point to the evidence of the truth of the Word (which contains that hope) in our natural world as well. Doubters need to be reassured by "His invisible attributes" in creation (Romans 1:20), and critics of Scripture need to be confronted with this evidence, too.

IN THE BEGINNING

Skeptics have long attacked the veracity of the Bible, looking for contradictions and lack of physical evidence to support it, sowing disbelief about the

Word even in the account about the creation.

Genesis 1:2 records that "God created the heavens and the earth," meaning He formed our universe and specifically our planet within it. Then, verse 2 details that the earth was "without form," or featureless, and that His Spirit was "hovering over the face of the waters" – a clear statement that there were no continents, just water.

Scientists certainly have taken issue with God's hand in creation, preferring to exult the "Big Bang Theory" as the origin of the universe. However, by logic a "big bang" means that matter must have existed before it would have compacted into a hot and dense pool of particles that exponentially expanded as if an explosion (more about this in a later arti-

cle).

But for about 75 years, since astronomer Fred Whipple proposed the "dirty snowball" theory about the composition of comets, scientists have rejected the biblical notion of a water world in the beginning, and instead argued that earth's watery surface resulted from a prodigious pummeling by comets (whose ice melted and pooled on our planet's surface) -- a theory more recently revamped to state that it was ice-laden meteorites (parts of passing asteroids) that collided with earth. An alternate theory suggests that water arrived with a single catastrophic crash from space that also produced the moon as debris.

Until now, or at least since May 2017.

That was when a joint research team from the Iowa State University and the University of Colorado released a report that concluded the whole world

was covered in water from the start, thus dispelling the notion that Earth's oceans resulted from ice released upon impact of meteorites with Earth.

They discovered evidence of heavy oxygen, Oxygen-18, in ancient waters instead of Oxygen-16, which is the most abundant isotope of Oxygen found in seawater today. Because soil readily absorbs Oxygen-18, the team concluded that continents did not exist then.

"Our research indicates there were no mountains and continental collisions" during Earth's early existence, they said. "It was a

much more quiet and dull place."

Their report added that this condition of a water world "pre-dated the Late Heavy Bombardment ... when the Earth was pummeled by comets and asteroids."

As a child of God, you can believe Genesis 1:1-2 because He spoke it.

But when you read that "the Spirit of God was hovering over the face of the waters," you can also know that the world of academia at least agrees that in the beginning, the Earth's oceans were already in place and not the result of ice from outer space.

Digital

from page one

have forced the Baptist Message to increase subscriptions by at least \$5 per customer, adding that "prudence would dictate an increase of up to \$10 per subscriber so that we would not be chasing funding all the time."

"I do not, and our trustees do not believe this is a cost our churches and individual subscribers can absorb," he explained. Baptist Message trustees approved the 2027 move to a digital-only format during their Sept. 9, 2025, board meeting.

Hall also said that all news services are increasingly moving toward digital only formats, due to an increasing preference for on-line delivery over print. He cited the example of the Atlanta Journal-Constitution, a 150-year-old newspaper that

announced in August of last year that it would end printing operations on Dec. 31, 2025, and publish exclusively via a digital format starting on New Year's Day, 2026.

"During 2026, the Baptist Message will begin to encourage readers to de-

pend more and more on the online edition of our news," Hall said. "We are confident we can draw readers to BaptistMessage.com for the news that we now publish in print and to access even more features that are available only online."

SEEKING FULL-TIME CHILDREN'S MINISTRY DIRECTOR

Ellerbe Baptist Church in Shreveport

Please submit resumes to dennis@ellerbebaptist.org



SAM MOORE, Evangelistic Ministries

479.381.1170, evangelistsammoore@gmail.com

Sam is a full-time vocational evangelist. He has the gift and calling of an evangelist. He served as a pastor for 22 years before going into evangelism in 2009. He is available for Crusades, Revivals, Harvest Days, Wild Game Supper Events and evangelism training. Call or email to schedule your 2026 event.

www.evangelistsammoore.com



TREE TROUBLES? WE CAN HELP

Licensed & Insured

- PROFESSIONAL TREE REMOVAL
- TREE PRUNING
- TREE TRIMMING
- STORM CLEAN-UP
- TREE MAINTENANCE
- LAWN MAINTENANCE

When it comes to tree care and landscape maintenance in CenLA, HLA Lawn & Tree Service is the name you can trust. With a team of licensed and fully insured arborists, HLA Lawn & Tree Service provides professional quality tree care and tree removal service for both residential and commercial properties. We are committed to delivering exceptional tree care and landscape maintenance solutions to our customers, and we are dedicated to ensuring the safety and beauty of our communities.

visit us online: www.hlalawnservices.com

CALL US TODAY! **318-TREEMAN**
318-873-3626

CONTACT US TODAY FOR A FREE ESTIMATE

For All Your LAWN MAINTENANCE Projects

Joseph Habedank

Live in Concert

DATE

Saturday, January 31st

PLACE

Sweetwater Baptist Church

5638 Beech Springs Rd

Quitman La 71268

TIME

6:00pm

PRESENTED BY DESTINY RESCUE

JosephHabedank.com

EDITOR'S NOTE: *The Baptist Message* provides churches an opportunity to share with other Louisiana Baptists an upcoming revival, homecoming, new pastor, new staff member, a community outreach, or a concert in *Louisiana Notables*. To place your event in the paper, send your information (who, what, where, when, time) to philip@baptistmessage.com or call 318.449.4345. Please submit your information four weeks prior to the event to insure placement in the Message.

ON THE MOVE

■ John, wife Emily, Roach is the new pastor at Summer Grove Baptist Church from Green Acres Baptist Church, Tyler, Texas.
■ Emily Alexander resigned as children's director at Ellerbe Baptist Church, Shreveport.
■ Jason, wife Jessica, McGuffie is the new pastor at Eastwood Baptist, Haughton. He comes from First West Monroe Baptist Church.

HOMECOMING

■ Wilda Baptist Church, Boyce: The Lefevre Quartet in Concert, for annual homecoming celebration. February 8, 9 a.m. Cost: Free entry. Pastor: Joey Rudisill.

REVIVAL

■ Fort Necessity Baptist Church. Fort Necessity: Revival. February 1-4. Evangelist: Sam Moore. Pastor: John Bradley.
■ Pleasant Hill Baptist Church, Jena: Spring Revival, February 1-4, Evangelist: Scotty McDowell. Pastor: Ricky Gresham.
■ New Hope Baptist Church, DeQuincy: Revival, February 15-18, 10:30 a.m. Sunday and 6:30 p.m. Monday thru Wednesday. Evangelist: Bill Britt. Worship" 11th Hour. Pastor: Roland Hebert.
■ Milldale Baptist Church and Conference Center, Zachary: Conference on revival, February 16-18. Evangelists: Herb Reavis, Malcom Ellis, Kevin Hamm, Marc Brunson. Worship: The Mackey Willis Family. Pastor: Jeremy Pruitt.
■ Deer Creek Baptist Association: Cluster Revivals, Feb 22-27, Sunday evening: 6 p.m. Crockett Point Baptist Church (Craig James) and First Baptist Church Wisner (Steve Horn); Monday, 7 p.m. Baskin Baptist Church (Steve Horn) and Bouef River Baptist Church (Craig James); Tuesday, 7 p.m., Coax Baptist Church (Craig James) and New Zion Baptist Church (Steve Horn); Wednesday, 6 p.m., First Baptist Crowville (Steve Horn) and Temple Baptist Church, Winnsboro (Craig James); Thursday, 7 p.m., Friendship Baptist Church, Baskin (Craig James) and First Baptist Gilbert (Steve Horn); Friday, 7 p.m., Harmony Baptist Church, Delhi (Steve Horn)

and Turkey Creek Baptist Church, Gilbert (Craig James).
■ Paron Baptist Church, Sterlington: Revival, February 22-25. Evangelist: Scotty McDowell. Pastor: Jeff Hurst.
■ First Baptist Church, Vidalia: Revival, February 22-25, Evangelist: Bill Britt. Pastor: Brad Watson.
■ Memorial Baptist Church, Longville: Spring Revival, March 1-4, Evangelist: Scotty McDowell. Pastor: Walter Edwards.

LAGNIAPPE

■ First Baptist Church, Coushatta: Seeking a full-time youth minister, full-time children's minister and part-time worship leader. Please send resumes to julie.fbccoushatta@gmail.com. Pastor: Cory Tucker.
■ Shiloh Baptist Church, Keatchie: Seeking a bi-vocational pastor. Please send resumes to JR Smith, 964 County Road 466, Carthage, TX 75633 or email sjohnr1@gmail.com.
■ First Baptist Church, Logansport: Seeking a director of discipleship and coordinator of facilities. Position open to be filled as either full time or part time. Housing options are available. Please send resumes to FBClogansportpersonnel@gmail.com. Pastor: Shawn Thrapp.
■ First Baptist Church, Many: Searching for a worship leader. The worship leader's main responsibility will be selecting and leading our music for morning worship on Sundays. This is a part-position. If interested, please contact the church office for an application or email resume to fbcmany@yahoo.com as soon as possible. Pastor: Timothy Robinson.
■ Temple Baptist Church, Winnsboro: Deer Creek Baptist Association annual men and boys fish fry, Jan. 31, 5 p.m. Pastor: James Busby.
■ Trinity Heights Baptist Church, Shreveport: Call to Prayer XI, February 1, 2026, 6 p.m. The combined choirs from Trinity Heights, Gospel Light and First Baptist Church, Blanchard. Pastor: Scott Teutsch.
■ Trinity Baptist Church, Jackson: Greg Sullivan Ministries, February 1, 11 a.m. Pastor: Phillip Mitchell.
■ Antioch Baptist Church, Farmerville: Concord Union Baptist Association Man Up Conference, February 6, 6 p.m. Speaker: Reggie Bridges, Temple Baptist Church, Ruston. Worship: Kevin Berry, Antioch Baptist Church, Farmerville. Enjoy a great meal, door prizes, plus a \$1,000 gift card to Simmons Sporting Good. Pastor: Rubin Weaver.
■ Jamestown Baptist Church, Jamestown: 3D Bowhunter Tournament and Wild Game Suppper, February 7. Wild Game Supper begins at 6 p.m. Guest Speaker, Gevan Spinney. Bring your family and friends for a delicious meal, door prizes and inspiring fellowship.

The 3D Bowhunter Tournament registration open at 2:15 p.m. Shoot begins at 3 p.m. Classes include: Men's Hunter 40, Women's Hunter 30, Youth Hunter 20 (12 years old and younger, novelty shoot. For more information call Ryan Hall (318.548.1679 or Stan Foster at 318.265.0759. Pastor: Stan Foster.
■ New Prospect Baptist Church, Dubach: The Southern Plainsmen Quartet in concert, February 8, 10:45 a.m. Pastor: Marvin Winham.
■ Airline Baptist Church, Bossier City: Bible Conference (The Study of Exodus) February 18-20, 8 a.m.-noon. Lunch \$12 each day (optional). Guest Speaker: Jeffrey G. Audirsch. Pastor: Terry Young.
■ Riverview Baptist Church, Alexandria: The Guardians Quartet, February 21, 6 p.m. Pastor: David Newton.
■ First Baptist Church, Anacoco: Iron Sharpens Iron men's conference, Feb. 21, 5 p.m. Pastor: Chad King.
■ Colyell Baptist Church, Livingston: Fifth-annual chili cookoff and vendor far, Feb. 21, 9 a.m.-1 p.m. For more information, call 225.698.6243. Pastor: Jeremy Glascock.
■ South Winnfield Baptist Church Winnfield: Women's conference, Feb. 21, 9 a.m.-4:30 p.m., with registration at 8:30 a.m. Guest speaker, Jasmine Hoychick, and worship leader, Madalyn Creel. Cost is \$10. Pastor: Jack Miller.
■ First Baptist Church, Mandeville: Everyman Conference 2026, February 28, 9:00 am - 4:00 pm. FBC Mandeville will host a one-day men's conference where you will be challenged, and encouraged, enjoy good fellowship, and sing with a room full of men. Main session speakers will be Jeff Crook (Lead Pastor of Christ Place Church in Flower Branch, GA) and Pastor Ronny Cooksey (Senior Pastor of FBC Mandeville).



Ten area churches gathered to assist with Norwood Baptist Church WMU's mission luncheon with proceeds supporting the Southeast Louisiana Pregnancy Center for the women and children in Bogalusa. Following a catered lunch by Iron Horse in Jackson, the 120 attendees listened as SLPC director Clelie Dugan and board director Patrick Magee explained the functions and needs of the center. NBC Deacon Jimmy Garig was the master of ceremonies, and NBC Pastor Cory Magee opened the event with prayer. Following lunch, a silent auction took place with a variety of items for sale, including the table decorations and 30 handmade crocheted animals by Mildred Hudson, a member of the NBC WMU. The event netted the pregnancy center \$7,000, delivered just before Christmas.

Other guest speakers will lead break-out sessions on relevant topics including "Creationism", "Spiritual Formation of Man", "Church Security", "Sharing the Gospel", "Image of God in an AI World", and others. Other activities include good food, classic cars, and giveaways. Registration details can be found under the events tab on the FBC Mandeville webpage at fbcmandeville.org.

org/event/ec26. Cost: \$40 through January 31, \$50 after January 31. A discount is offered to groups of 8 or more. There will also be a Man Lunch and snacks provided. Pastor: Ronny Cooksy.
■ Airline Baptist Church, Bossier City: Men's Beast Feast Fish Fry, March 1, 6-8 p.m. There will be a \$10 donation. All proceeds go to missions. Pastor: Terry Young.

Scripture Crypto

The Scripture Crypto is a Bible verse in which one letter has been substituted for another, thus encoding the verse. To find out what the verse is, you must determine what each letter is a substitute for. An "a," for example, may stand for a "t" in this week's issue of the ScriptureCrypto. Next week, "a" could stand for a "d." Each week, each letter is different. Solve by trial and error. The answer will be given next week. Note: All numerals, such as those in the scripture reference after the verse, are spelled out.

izw pfgz mgbxb bip qfiq fg izbpqygw
wvbhyggqsu, fg bivw xzqr fvd, qfrx iyq zrq niy
nyrd qfg evztwrd rn trw. izw zr diz inqgy qfiq
wxybq ibe fvd izu lxgbqvrz.

diye qpgskg:qfvyqu-nrxy

Clues:
G = E; Y = R

Answer to December 18, Scripture Crypto:
Joshua fourteen:two

LACOSBE

LOUISIANA CONFERENCE OF SOUTHERN BAPTIST EVANGELISTS

Use an evangelist for your next revival, crusade or harvest day event.
Go to LACOSBE.org

"And he gave some, apostles; and some, prophets;
and some, evangelists; and some, pastors and teachers;
For the perfecting of the saints, for the work of the ministry,
for the edifying of the body of Christ;" Ephesians 4:11-12

FIRST PERSON: The sacred calling of foster care

By Christy Goodwin
Special to the Message

MONROE, La. (LBM) -- It is no secret that our nation is in the middle of a foster care crisis, and Louisiana is no exception among the 50 states.

Today there are approximately 4,300 children and youth in foster care in Louisiana and only 2,100 foster families -- more than twice as many children in need as there are homes for them. Moreover, when the numbers are closely examined, the situation is even worse than it seems.

Not all Louisiana foster families are "generally certified," which means they are able to host any child who

enters foster care. Only 1,207 are so qualified. So, the gap between need and availability is staggering, despite the presence of so many Christian homes in our state.

I think most Christ-followers can agree that caring for vulnerable children is close to the heart of God. After all, James 1:27 includes orphan care, and implicitly foster care, as an essential element of "pure and undefiled religion." In fact, a Lifesong for Orphans survey in 2024 found that 31 percent of practicing Christians in the United States have seriously considered fostering. However, the same survey revealed that only 3 percent of practicing Christians are foster

parents.

How do we bridge that gap? Christians need to submit to the ministry of foster care!

Here are three biblical truths that contextualize foster care ministry and might help you surrender to that sacred calling:

1. Jesus sought the hurting, broken and vulnerable. Jesus had compassion on those who were mistreated and overlooked by society. He met them where they were, in their messy and broken state, and offered them hope.

Christ-centered foster parents have a similar opportunity to step into dark places to offer healing and restoration to children and families. By displaying Christ's countercultural love -- providing care for children who have experienced abuse and neglect -- we can help restore hope and joy to children who will learn to trust Jesus as the ultimate healer and provider.

2. Foster care is Gospel ministry. God calls seemingly unimportant people to accomplish great things. We see that in Scripture through the lives of Esther, Gideon and many others. Thankfully, God still invites us today to participate in life-changing Gospel work. Matthew 28:18-20, known as the Great Commission, instructs us to

make disciples of all nations, and this invitation is very relevant to us today, especially so in foster care ministry.

Foster parents have the unique opportunity to serve as missionaries in their own homes, inviting children into their lives who often have never heard the Good News. In our Christ-filled homes, children in foster care are introduced to Jesus and the love of a church family, and many experience the life-changing power of salvation through Jesus Christ. Other children begin to lean into the hope and stability that the Church, the body of Christ, can provide.

Foster care also offers other opportunities to share the Gospel -- with case workers, biological family members and others involved in the child's life. Many people have come to know salvation in Christ because of their connection to a Christ-centered foster family.

3. God uses foster care to draw us closer to Him. The most common fear that stops Christians from becoming foster parents is the dread of getting too attached and then having to let go of a child. This is a valid concern as almost two-thirds of children in foster care in Louisiana eventually reunify with their birth families. However, in grappling with such uncertainty there is comfort in

knowing that God is sovereign and in control. We can trust that God is working all things together for good. As we pour our lives into children in foster care, we experience His peace and provision in ways that we might not have otherwise experienced.

Yes, foster care is hard. But it is also a sacred and sanctifying calling that can grow and stretch us spiritually.

=====

Are you ready to take the next step?

If you are considering becoming a foster parent in Louisiana, Connect1Child, the off campus foster care and adoption ministry of Louisiana Baptist Children's Home, would love to walk alongside you. Our team of foster care and adoption specialists can provide you with information, resources and support as you begin your journey.

Please email Christy Goodwin at christy@lbch.org, or call 318-343-2244, to learn more.

Christy Goodwin is the Connect1Child director with the Louisiana Baptist Children's Home and Family Ministries. She is a licensed clinical social worker, and a board approved clinical supervisor.

After 30 years of prayers, pastor's brother accepts Christ

By Staff
Baptist Message

GULFPORT, Miss. (LBM) -- For 30 years, Kevin Colson had prayed for his brother Scott's salvation, and God answered his prayers, Dec. 27, when he traveled more than three hours for a visit that ended in Scott, who was hospitalized from injuries sustained in a car accident in Gulfport, Mississippi, turning to Jesus.

"This had always been a heavy burden on me, and I prayed that the Lord would give me a strong effort,"

Colson, who is the pastor of Grace Community Baptist Church, Iota, told the Baptist Message. "He's as hard-headed as me, so I was thankful that he listened and that before I left, he gave life to Christ."

Colson said he now will connect Scott with a Bible-believing church in the Gulfport area. He added that his brother's decision reinforces the need for others to continue sharing about Christ with others.

I would tell others don't quit," he said. "Be patient. Don't force the Gospel but be persistent. God will

open the door and opportunity to share the Gospel in His time."

BAPTISMS from page one

Every year there are different variables that influence the data reported via the Annual Church Profile survey, including the number of congregations that provide inputs. During the last seven years, Louisiana Baptists also were impacted by COVID 19 related restrictions on churches, 2020-2022, as well as by four hurricanes that struck the state in 2021.

CHILDREN NEED FOSTER HOMES NOW

"Defend the cause of the fatherless." Psalm 82:3

Right now, children in Louisiana are entering foster care with no available homes. The need is urgent. There are more children than open foster beds.

God uses faithful families to provide safety and hope. Your response matters today.

Already a Certified Foster Parent?

- Children need placements now.
- Short-term & long-term homes needed.
- If you have space, please contact us.

Not Yet Certified?
"Here am I. Send me." Isaiah 6:8

- You don't have to be perfect.
- Training and support are provided.
- Take the first step today!

TAKE THE NEXT STEP TODAY:

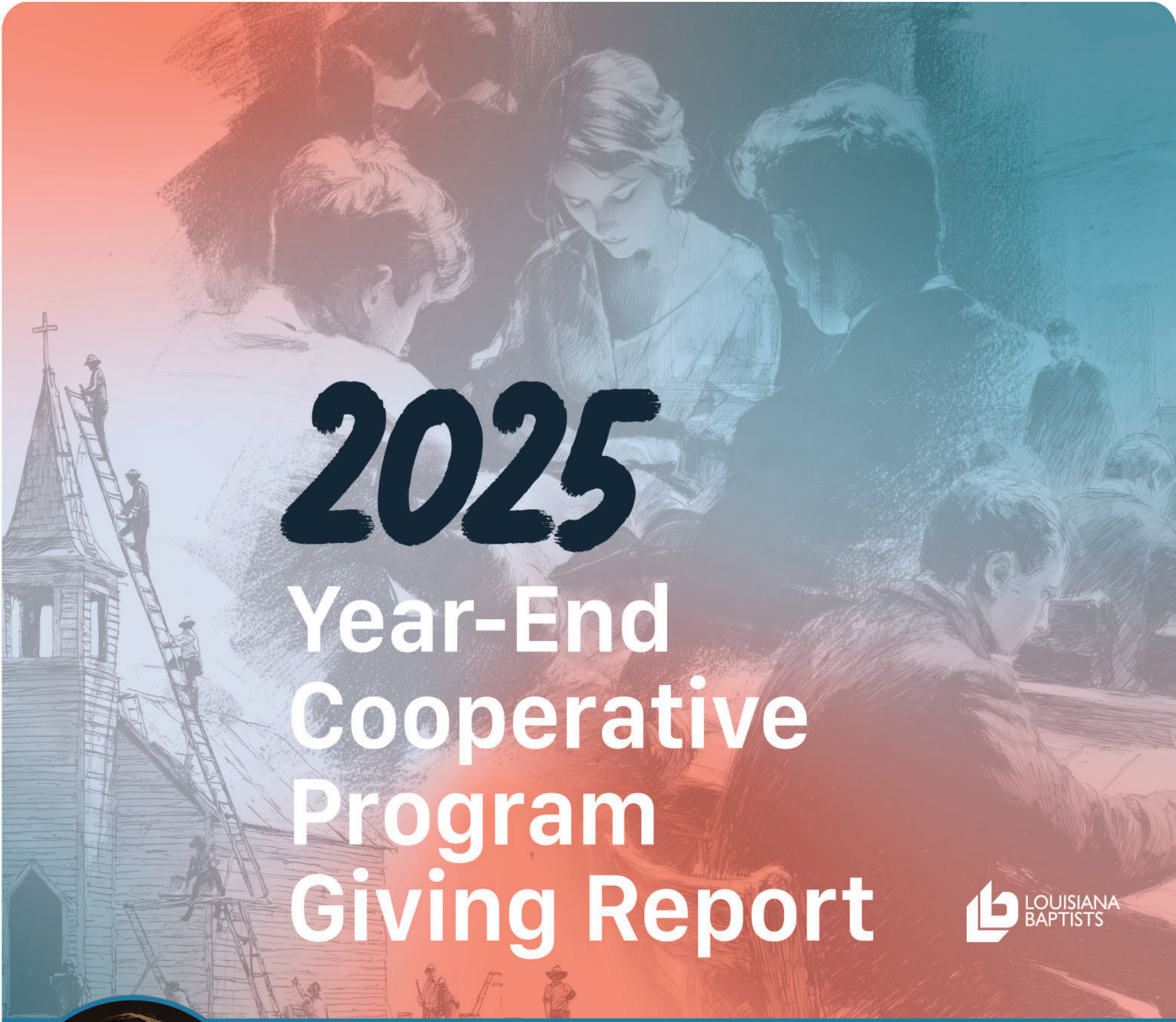
- Fill out an interest form by scanning the QR code.
- Visit: lbch.org/foster-adoption.php
- Call: 318-343-2244

LOUISIANA BAPTIST CHILDREN'S HOME

Connect1Child

FOSTER CARE & ADOPTION

CONNECTING CHILDREN WITH THE HOPE OF THE GOSPEL, LOVE OF A FAMILY, AND SUPPORT OF A CHURCH THROUGH THEIR FOSTER CARE JOURNEY AND BEYOND



2025

Year-End Cooperative Program Giving Report



TOGETHER

Neil Armstrong, as he walked on the moon, famously said, "One small step for man, one giant leap for mankind."

Armstrong's words come to mind as I think about our Cooperative Program giving in Louisiana in 2025. Louisiana Baptists gave just shy of **\$129,000** more in 2025 than we did in 2024 through the Cooperative Program. Some may see this as a small step, but it is a small step that we should celebrate. Because of this small step, every Louisiana Baptist Convention and Southern Baptist Convention entity received more from our giving in 2025 than 2024. That is giant! That is a giant leap for missions around the world. That is a giant leap for our missions and ministry here in Louisiana.

In 2025, we celebrated the 100th anniversary of giving as Southern Baptists through the Cooperative Program. The significance of that milestone will be both celebrated and confirmed by what we do next.

I pray we will continue to make steps that progress our cooperative efforts to advance the Gospel.

As you have hopefully heard, I have begun to hold listening sessions around the state specific to a discussion about the Cooperative Program. I want to hear from you. I hope that you will make plans to join us for one of the listening sessions. You can learn more about our Together 2026—A Cooperative Listening Tour at LouisianaBaptists.org/Together. Keep checking the website as we add other dates.

Until then . . .
Keep Looking Up,

DR. STEVE HORN

Dr. Steve Horn
Executive Director, Louisiana Baptists

2

COOPERATIVEPROGRAM

Acadia Association

CP 2025

LBC Causes*

Berean, Crowley		
Calvary, Opelousas		315.00
Elizabeth Memorial, Branch	4,830.38	234.00
Emmanuel, Eunice		
Eunice Cornerstone, Eunice		
First, Basile	9,650.84	790.00
First, Chataignier	575.00	
First, Crowley	4,999.96	
First, Eunice	14,499.13	3,280.00
First, Evangeline	1,514.18	255.00
First, Gueydan	9,443.30	
First, Iota	300.00	
First, Mamou		
First, Opelousas		
First, Port Barre	7,612.00	
First, Rayne		
First, Ville Platte	35,307.00	718.00
Grace Community, Iota	825.00	570.00
New Hope of Panchoville, Jennings	2,904.50	670.00
New Horizon, Church Point	20.00	91.25
New Life Community, Arnaudville.....		
North Eunice, Eunice.....		
Parkerson Avenue, Crowley	1,409.70	482.00
Pathway, Opelousas	50.00	10.00
Pilgrim Rest, Eunice	5,199.96	2,500.00
University, Eunice.....		50.00
Victory, Estherwood	441.84	
Washington, Washington.....	1,759.00	609.00

Baton Rouge Association

CP 2025

LBC Causes*

Ascension, Gonzales	1,177.52	200.00
Bayou Plaquemine, Plaquemine	2,525.00	1,361.00
Bayou Sorrel, Plaquemine	2,241.00	
Belfair, Baton Rouge		
Bethel Baptist Worship Center, Morganza		
Broadmoor, Baton Rouge		
Brownfields, Baton Rouge		
Cane Brake, Lottie		
Cedarcrest, Baton Rouge	1,450.00	
Christ Covenant, Baton Rouge	14,000.00	914.12
Church at Addis	10,887.54	
Church of Life, Baton Rouge	425.00	175.00
Church of the Nations, Baton Rouge		
Comite, Baton Rouge	4,556.45	1,120.00
Community Bible Baptist, Baton Rouge	142.00	180.00
Confraternidad, Prairieville.....	2,063.01	300.00
Courtableau, Port Barre		300.00
CrossPoint, Baton Rouge	15,000.00	832.26
Douglas Avenue, Baton Rouge		
Dutchtown, Prairieville	100.00	
Erwinville, Erwinville	12,044.74	1,598.00
Faith Temple, Baton Rouge		
Faith, Baker	4,739.82	1,240.00
Faith, Livonia	456.00	
Family of Faith, Baton Rouge	16,330.00	500.00
FBC Central, Baton Rouge		520.00
Fellowship of Central, Greenwell Sp	976.46	4,409.91
Fellowship, Prairieville	142,088.50	
Filipino Fellowship I'nati, Prairieville	640.00	
Filipino-American Fellowship, Baton Rouge		
First Community Antioch, Lutchter.....	3,500.00	
First Unity, Baton Rouge	730.00	
First, Baton Rouge	52,172.19	8,045.23
First, Gonzales	1,200.00	784.55
First, Gramercy	4,639.00	261.00
First, Krotz Springs	18,104.80	2,412.89
First, Maringouin		178.32
First, New Roads	52,871.55	143.00
First, Plaquemine	452.83	3,936.22
First, Port Allen	550.00	1,631.42
First, Reserve		
First, White Castle	7,768.42	1,448.78
First, Zachary	284,372.00	28,793.27
Fordoche, Fordoche	4,771.87	
Foster Road Community, Baton Rouge		
Foster Road, Baton Rouge	13,533.16	1,086.00
Friendship, Baker		
Gethsemane, Baton Rouge		
Glen Oaks, Baton Rouge		
Goodwood, Baton Rouge	1,000.00	
Grace Community, Baton Rouge		
Graceworks, Prairieville		
Greenwell Springs, Greenwell Springs	43,099.81	
Grosse Tete, Grosse Tete	2,223.00	3,931.71
Immanuel, Central	474.90	
Indian Mound, Greenwell Springs.....	1,200.00	403.02
Istrouma Ascension, Prairieville		
Istrouma Hispanic, Baton Rouge		
Istrouma, Baton Rouge	383,265.94	6,666.67
Jefferson Hispanic, Baton Rouge	791.11	
Jefferson, Baton Rouge	280,437.43	7,892.48
Lake Church, Prairieville.....	12,316.68	
Lanier, Baton Rouge	13,783.00	1,895.00
Latanache, Batchelor		419.00
Life Changers, Zachary		50.00
Little Prairie, Praireville	3,785.00	995.00
Louisiana Chin, Gonzales		
Louisiana Kachin, Baton Rouge		
New Beginnings, Baker		
New Day, Baton Rouge	2,873.40	250.00
New Life Church, Baton Rouge	2,359.79	340.00
New River, St Amant	28,467.03	1,860.00
Oak Grove, Prairieville		1,100.62
Parkview, Baton Rouge	81,885.20	5,316.39
Progression, Baton Rouge		
Redeemer, Baton Rouge	9,534.58	55.00
Riverbend, Baton Rouge		

Sharon, Port Allen.....	1,300.00	
Sorrento, Sorrento		2,510.00
Stevendale, Baton Rouge	7,090.71	
Trinity, Baton Rouge	324.40	300.00
True Hope, Plaquemine.....	900.00	
United Believers, Baton Rouge	1,200.00	
University, Baton Rouge		50.00
Vietnamese Hope, Baton Rouge	12,244.20	3,245.00
Westside Community, Addis.....	3,340.00	
Woodlawn, Baton Rouge		1,250.00
Zoar, Baton Rouge	13,612.06	12,023.53

Bayou Baptist Association

CP 2025

LBC Causes*

Agape, Houma		
Bayou DuLarge, Theriot	253.55	
Bethel, Bourg.....		
Bourg, Bourg	2,000.00	
Calvary, Thibodaux	4,390.40	125.00
Christ, Houma	2,189.47	1,622.08
Cornerstone, Houma		
Covenant, Houma		17,788.30
Des Allemands, Des Allemands.....		
El Buen, LaRose		
First, Golden Meadow	1,200.00	600.00
First, LaRose		
First, Lockport	5,572.02	415.00
First, Napoleonville.....	9,964.35	20.00
First, Raceland	1,200.00	244.00
First, Thibodaux	960.00	
Gibson, Gibson	2,659.00	675.00
Grand Caillou, Houma	1,249.21	713.26
Gulf Coast, Golden Meadow	298.56	97.50
Kingdom Life Fellowship, Houma		
Live Oak, Montegut	2,340.84	200.00
Mechanicville Emmanuel, Houma		
Mulberry, Houma	26,617.54	10.00
Nueva Vida, Houma	500.00	100.00
Schriever, Schriever	5,576.00	1,100.44
South Lafourche, Cut Off	1,267.00	340.00
The Hill, Houma		
Trinity, Mathews		
University, Thibodaux	16,545.10	2,094.00

Bayou Macon Association

CP 2025

LBC Causes*

Bethlehem, Oak Grove.....		
Beulah, Oak Grove		1,500.00
Epps, Epps	6,173.64	1,395.00
First, Kilbourne	2,000.04	4,782.00
First, Lake Providence	12,563.97	880.00
First, Oak Grove	29,123.00	2,115.52
First, Sondheimer	1,661.00	100.00
Forest Hispanic, Forest		
Forest, Forest	16,537.41	1,252.05
Goodwill, Oak Grove		1,523.00
Green, Oak Grove.....		
Herringville, Lake Providence		
Hill, Oak Grove	7,101.55	1,687.00
Lane's Ferry, Lake Providence	5,103.16	100.00
Little Creek, Epps		
Macedonia, Oak Grove	9,839.61	3,880.00
Melbourne, Transylvania	5,485.44	255.00
Monticello, Lake Providence		
New Hope, Lake Providence		
New Prospect, Pioneer	601.00	
New Zion, Oak Grove.....	5,261.85	120.00
Pioneer, Pioneer	5,532.12	390.00
Transylvania, Transylvania	6,235.15	400.00
Trinity, Oak Grove	2,993.97	1,444.00
Unity, Oak Grove	3,597.88	
Walnut Grove, Epps	5,007.99	1,000.00

Beauregard Association

CP 2025

LBC Causes*

Arkadelphia, Pitkin	8,409.08	1,000.00
Beauregard Friendship, DeRidder	5,354.40	530.00
Beauregard Memorial, Longville	3,850.00	
Brushy Creek, Bancroft	3,480.00	
Calvary, Merryville	22,501.10	1,745.00
Cherry Grove, Dry Creek	5,300.00	1,025.00
Diamond, DeRidder	4,714.51	595.00
Dry Creek, DeRidder	13,760.97	4,460.51
Emanuel Hispanic, DeRidder		
Faith, Ragley		
First, DeRidder	89,751.44	6,635.00
First, Longville	4,843.00	
First, Merryville	15,661.66	1,284.00
Gambrell, Starks	961.74	
Glade Branch, Leesville	675.00	
Good Hope, Singer	2,400.00	705.00
Green Oak, Merryville		
Hebron, Kinder	698.25	
Hilltop, DeRidder	125.00	
Hopewell Community, DeRidder	2,932.00	994.00
Lone Star, Pitkin	534.00	
Magnolia, Ragley	16,776.37	375.00
Marlow, Leesville	635.66	
Mystic, Merryville	2,960.75	
New Life, DeRidder	23,374.37	2,648.13
Occupy Two, Pitkin	2,163.21	
Open Door, Ragley		
Palestine, Grant	17,320.76	2,073.00
Pilgrims Rest, Dequincy		1,140.00
Pleasant Hill, DeRidder	23,479.86	
Providence, Leesville	900.00	
Reeves, Reeves		
Shady Grove, Pitkin	1,500.00	1,150.00
Shiloh, DeRidder	4,480.52	
Singer, Singer	6,572.03	1,096.45
Smyrna, DeRidder	1,584.00	425.00

Sugartown, Sugartown	1,621.83	235.00
Temple, DeRidder	1,396.94	30.00
Texas Avenue, DeRidder	12,312.00	2,742.00
Unity, DeRidder	720.00	1,440.00
Westview, DeRidder	14,523.47	1,605.00

Bienville Association

CP 2025

LBC Causes*

Alabama, Arcadia	3,732.33	2,235.00
Bryceland Cristo es la Roca	3,005.90	
Carolina, Saline		
First, Arcadia		10,966.58
First, Bienville		
First, Castor		
First, Gibsland	7,451.97	1,485.00
First, Ringgold	10,879.00	1,300.00
Friendship, Bienville	3,600.00	1,275.00
Iglesia Bautista Nueva Vida, Athens		242.70
Jamestown, Jamestown.....	8,927.24	573.00
Magnolia, Saline	500.00	1,126.00
Mt Lebanon, Gibsland.....	600.00	572.00
Mt Olive, Quitman		
New Beginnings, Castor	284.10	
New Bethel, Arcadia	750.00	250.00
New Ebenezer, Castor	1,609.23	28,870.92
New Ramah, Castor	300.00	310.00
Old Saline, Castor		
Pine Grove, Castor	14,289.60	6,500.00
Resurrection Fellowship, Jamestown	1,589.53	
Second Chance, Arcadia		
Taylor, Taylor	3,449.05	
Union, Quitman		

Big Creek Association

CP 2025

LBC Causes*

Bentley, Bentley	750.00	1,000.00
Bethel, Colfax	11,640.00	900.00
Beulah, Winnfield	2,281.94	
Big Creek, Dry Prong.....	750.01	1,187.83
Bob, Pollock.....		
Colfax, Colfax	3,364.29	907.00
Fairfield, Dry Prong.....		673.12
First, Dry Prong	46,191.53	3,905.00
First, Montgomery	2,860.80	961.00
First, Pollock	617.00	3,017.13
Georgetown, Georgetown	1,950.00	1,600.00
Hargis, Montgomery	265.99	
Hebron, Dry Prong	10,804.00	1,581.00
Hudson Creek, Colfax	612.00	180.00
Iatt, Atlanta		390.00
Liberty Christian, Colfax.....	900.00	400.00
Lincecum, Pollock	18,154.23	
New Friendship, Pollock.....	12,189.00	505.00
New Prospect, Dry Prong.....	34,977.89	1,562.00
Northside, Montgomery.....		
Oak Grove, Bentley		
Pleasant Hill, Pollock	10,291.00	2,640.00
Selma, Georgetown		
Sherwood, Tioga		
Summerfield, Colfax	300.00	25.00
Verda, Atlanta	2,562.00	535.00
Walnut Grove, Colfax		
Wayside, Pollock	19,318.86	19,969.87
Zion Hill Of Williana Inc, Dry Prong		
Zion, Georgetown	635.15	1,450.00

Caldwell Association

CP 2025

LBC Causes*

Banks Springs, Columbia		250.00
Belview, Columbia	300.00	170.00
Bethany, Columbia		1,175.00
Columbia Heights, Columbia.....		
Cross Roads, Grayson	900.00	200.00
Fellowship, Columbia		
First, Columbia	31,650.60	845.00
Grayson, Grayson	21,065.79	690.00
Hebron, Sikes		
Holum, Grayson		
Kelly, Kelly.....		
Mt Pleasant, Columbia		
Old Bethel, Clarks		
Palestine, Columbia		
Sandy Bayou, Columbia	2,074.21	3,688.00
Springhill, Grayson	500.00	708.00

Carey Association

CP 2025

LBC Causes*

Antioch, Vinton.....		
Belview, Westlake	1,589.30	50.00
Bethel Metropolitan, Lake Charles		
Bethel Ministries, Jennings	600.00	
Calcasieu Bethany, Lake Charles		
Calvary, Lake Charles		
Cameron First		
Carlyss First, Sulphur	1,200.00	347.85
Central, Sulphur	2,101.00	
Choupique, Sulphur	18,000.00	12,274.00
Cornerstone, Jennings	4,712.70	770.00
Crossroads, Vinton.....	2,400.00	
DeQuincy First	12,000.00	432.01
East Ridge, Lake Charles		12,220.94
Elton First	765.00	2,264.00
Emmanuel, Lake Charles	4,766.27	
Emmanuel, Vinton		
Fenton, Fenton		
First North, Deridder		
First Sulphur	43,584.39	995.49
Ford Street, Lake Charles	1,000.00	500.00
Gillis First.....	1,068.84	
Grand Lake Community, Lake Charles		200.00
Hackberry First.....	11,384.66	830.00
Hayes First	2,846.55	250.00

*LBC Causes include the Georgia Barnette Louisiana Missions Offering

Historic St. Paul, Kinder		
Holy Nation, Lake Charles		
Houston River, Sulphur	94,235.62	15,388.31
Iglesia Hispana, Sulphur	2,521.74	200.00
Indian Village, Kinder	2,475.00	465.00
Iowa First		
Jennings First	15,521.92	19,363.09
Johnson Bayou, Cameron	4,199.86	
Kinder First		
Lake Arthur First	1,544.17	1,544.17
Lake Charles First	33,339.53	5,175.00
Magnolia, Vinton		
Maplewood First, Sulphur	61,521.28	4,239.16
Messiah Missionary, Lake Charles		
Moss Bluff First, Lake Charles	80,000.04	3,055.92
Mount Olive, Lake Charles	600.00	
Mt Pilgrim Baptist Church, Lake Charles		
New Hope, DeQuincy	13,808.22	1,050.00
New Shiloh, Lake Charles		
Northside, DeQuincy		501.00
Olivet, Sulphur	24,359.21	1,554.00
Open Gate Western Heritage, Lake Charles	400.00	
Parkview, Sulphur	6,000.00	
Pine Grove, DeQuincy	3,000.00	894.56
Roanoke, Roanoke	10,484.38	1,664.00
Sale Street, Lake Charles	4,488.24	4,010.69
Starks First	21,373.84	2,137.76
Sulphur Community, Sulphur		
Tom Hebert Road, Lake Charles	3,944.00	886.00
Topsy, Lake Charles	4,455.00	520.00
Trinity, Lake Charles	240,000.00	41,342.70
Trinity, Sulphur	5,000.00	
University, Lake Charles		400.00
Vinton First	5,279.60	
Welsh First	11,933.01	3,162.00
Westlake First	29,857.84	1,610.00
Westside, Lake Charles		
Westwood, Westlake	7,099.85	
Woodlawn, Iowa	12,092.70	1,292.00

CenLa AssociationCP 2025LBC Causes*

Alexandria Korean, Alexandria		
Alpine First, Pineville	15,000.00	800.00
Big Island, Deville		
Calvary Of Gardner, Boyce	1,860.65	1,536.83
Calvary Woodworth		
Calvary, Alexandria	285,416.65	60,396.93
Cedar Grove, Lecompte	600.00	729.00
Cloverdale, Alexandria	8,320.00	
College Drive, Pineville	1,050.42	
Cornerstone, Ball	436.04	202.50
Cotile, Boyce	4,249.27	3,066.99
Cross Branded, Pineville		
Emmanuel, Alexandria	250.00	
Esler, Pineville		3,030.51
Faith, Pineville	9,834.51	814.00
Family of Grace South		
Family of Grace, Alexandria		
First Baptist Church Of Ball, Pineville		
First, Boyce	11,515.36	1,333.61
First, Lecompte	25,421.11	1,410.00
First, Pineville	178,311.28	23,794.00
Gardner, Boyce	997.23	970.00
His Church, Pineville	8,900.00	2,806.00
Holloway, Deville	12,036.00	1,495.00
Homewood, Alexandria	8,086.69	520.00
Hopewell, Center Point		
Hosanna, Pineville		
Journey Church, Pineville	6,000.00	
Kingsville, Ball	160,438.62	13,342.00
Lakeside, Pineville	2,356.17	485.95
Lamourie, Lecompte	168.00	
Longview, Deville	16,856.50	2,218.73
Macedonia, Effie	5,873.03	116.00
Main Street, Pineville	4,200.00	1,286.24
Mt Zion Missionary, Alexandria		
New Christian Life Fellowship, Alexandria		
Oak Grove, Cheneyville		
Parkview, Alexandria	4,854.51	615.47
Philadelphia at Horseshoe Drive, Alexandria		
Philadelphia, Deville	282,998.74	8,609.30
Pine Grove, Ruby	11,360.35	850.00
Pinehurst, Ball	4,700.00	245.00
Pineville Park, Pineville	19,031.06	740.00
Poland, Alexandria	5,040.70	50.00
Richey, Deville		1,742.89
Riverview, Alexandria		5,632.73
St Clair, Boyce	18,949.97	
The Gathering Place West, Alexandria	906.58	445.53
Tioga First, Pineville	19,824.99	2,118.00
Trinity, Pineville	6,600.00	2,000.00
Twin Bridges, Alexandria	1,200.00	
Unity, Pineville	9,454.57	50.00
Vick, Vick	2,756.40	2,782.00
Wilda, Boyce	1,500.00	4,000.00
Wooddale, Alexandria	944.00	

Concord Union AssociationCP 2025LBC Causes*

Antioch, Farmerville	47,090.00	2,792.00
Bethel Hispanic, Bernice		
Bethel, Lillie	2,651.79	3,578.02
Bethlehem Hispanic, Ruston	6,481.00	1,154.00
Beulah, Farmerville		
Calvary, Ruston	105,364.83	2,148.50
Camp Creek, Spearsville	3,336.84	270.00
Canaan, Spearsville	108.00	
Conway, Marion	1,528.83	451.06
Cook, Ruston	92,903.69	19,008.00



THE GENESIS OF COOPERATION

Since its formation in 1845, members of the Southern Baptist Convention actually believed the words of Jesus when He said, "Go into all the world." However, for decades, we spent more time raising funds than fulfilling the mission. The results - growing debt and endless appeals.

OUR "EUREKA" MOMENT

In 1925, Baptists discovered and unleashed the power of cooperation.



Visit LouisianaBaptists.org/CP for more information and resources.

*LBC Causes include the Georgia Barnette Louisiana Missions Offering

4

COOPERATIVEPROGRAM

Crestview, Farmerville.....	11,375.29	2,292.34
Cross Roads, Farmerville.....	3,000.00	1,650.00
Culbertson, Farmerville.....	14,864.40	1,125.00
DaySpring, Ruston.....	640.00	
Dean, Marion.....	1,800.00	
Downsville, Downsville.....	8,892.21	450.00
Emmanuel, Ruston.....	56,276.91	9,897.00
Enterprise, Farmerville.....		
Evergreen, Bernice.....	8,648.81	
Fellowship, Dubach.....	31,648.64	12,759.00
First, Bernice.....	5,478.29	845.00
First, Choudrant.....	9,000.00	2,761.00
First, Dubach.....	24,926.58	4,938.00
First, Farmerville.....	57,592.93	
First, Marion.....	26,561.92	1,800.00
First, Ruston.....	159,177.84	10,470.00
First, Simsboro.....		3,584.34
First, Spearsville.....	8,226.46	826.25
Haile, Marion.....		
Hico, Dubach.....	6,781.30	
Holmesville, Downsville.....	2,700.00	165.00
Hopewell, Spearsville.....	100.00	275.00
Iglesia Jesucristo es el Camino, Farmerville.....	100.00	845.00
Liberty, Marion.....	9,454.30	900.00
Litroe, Marion.....		300.00
Longstraw, Choudrant.....	3,918.04	534.00
Meridian, Marion.....		
Mineral Springs, Dubach.....	9,724.07	100.00
Mt Ararat, Downsville.....	9,375.98	840.00
Mt Tabor, Bernice.....		180.00
Mt Union, Spearsville.....	2,301.57	4,516.32
Nazareth Mission, Bernice.....	999.00	440.00
New Hope, Choudrant.....	53,317.35	3,965.00
New Prospect, Dubach.....	2,696.92	
Paron, Sterlington.....	7,327.63	1,473.67
Pine Grove, Bernice.....	7,040.00	1,200.00
Pisgah, Bernice.....	100.00	1,135.03
Pleasant Grove, Choudrant.....		
Pleasant Hill, Farmerville.....	1,100.00	1,995.00
Pleasant Hill, Ruston.....	525.00	200.00
Providence, Downsville.....	2,111.36	200.00
Rock Corner, Dubach.....	20,091.17	2,727.05
Rocky Branch, Farmerville.....	1,300.00	330.00
Saint Rest, Dubach.....	4,577.70	550.00
Salem, Farmerville.....	1,000.00	
Sardis, Farmerville.....	1,800.00	200.00
Sharon, Dubach.....	14,400.00	5,285.00
Shiloh, Bernice.....		745.00
Spencer, Sterlington.....	4,000.00	
Temple, Ruston.....	340,000.00	39,893.72
The Springs, Ruston.....	1,800.00	3,199.79
Union Grove, Lillie.....	560.00	1,286.00
University, Ruston.....		
Weldon, Bernice.....		5,010.53
Zion Hill, Farmerville.....	2,400.00	1,610.00

Deer Creek Association	CP 2025	LBC Causes*
Baskin, Baskin.....	1,966.60	20,674.07
Bayou Macon, Gilbert.....	600.00	
Boeuf River, Winnsboro.....	750.00	
Calvary, Gilbert.....		2,827.00
Chase, Chase.....	7,226.24	715.00
Coax, Winnsboro.....	10,334.52	974.00
Crockett Point, Winnsboro.....	17,648.35	2,554.02
Eureka, Gilbert.....	4,271.36	276.00
First, Crowville.....	29,686.10	6,001.00
First, Gilbert.....	4,200.00	500.00
First, Winnsboro.....	16,943.95	
First, Wisner.....	39,362.40	
Fish Bayou, Winnsboro.....	1,598.08	100.00
Fort Necessity, Fort Necessity.....	1,200.00	583.06
Fort Road Oak Grove, Winnsboro.....	2,281.02	2,050.00
Friendship, Baskin.....	13,972.00	2,700.00
Harmony, Delhi.....		
Hill Ridge, Winnsboro.....	852.00	
Holly Grove, Wisner.....	6,166.05	1,320.00
Lamar, Delhi.....		1,762.50
Lone Cedar, Winnsboro.....		
Lone Pine, Winnsboro.....	286.00	200.00
Magnolia, Winnsboro.....	2,389.20	420.00
New Zion, Winnsboro.....	1,650.00	80.00
North Central, Delhi.....		
Sardis, Winnsboro.....		
Shady Grove, Winnsboro.....		
South Central, Wisner.....		
Taylor Bayou, Winnsboro.....		
Temple, Winnsboro.....	1,200.00	4,046.63
Turkey Creek, Gilbert.....	1,200.00	300.00

Delta Association	CP 2025	LBC Causes*
Bethany, Newellton.....	1,421.44	200.00
Bougere, Vidalia.....	500.00	250.00
Clayton, Clayton.....	943.00	
First, Ferriday.....	44,652.00	4,482.41
First, Newellton.....	6,225.48	6,169.12
First, Vidalia.....	92,407.59	12,532.00
First, Waterproof.....	2,234.15	1,099.00
Flowers Landing, Newellton.....	2,546.00	
Hill Memorial, Ferriday.....	3,300.00	515.00
Lake St John Community, Ferriday.....	1,192.16	500.00
Maryland, St Joseph.....		2,027.40
Ridgecrest, Ridgecrest.....		
Riverside, Vidalia.....		4,944.63
St Joseph, St Joseph.....	6,876.20	680.00
Westside, Ferriday.....	500.00	

DeSoto Association	CP 2025	LBC Causes*
Antioch, Mansfield.....		1,030.00
Benson, Converse.....		
Beulah, Mansfield.....	7,563.45	
Calvary, Mansfield.....		
Carmel, Mansfield.....		
Cedar Hill, Grand Cane.....	300.00	75.00
Emmanuel, Mansfield.....	2,727.00	
Fellowship, Mansfield.....		785.00
First Community, Mansfield.....	500.00	
First, Logansport.....	37,819.00	6,471.50
First, Mansfield.....	50,836.96	5,615.00
Frierson, Frierson.....		2,603.21
Gloster, Gloster.....	114,912.22	9,301.85
Grand Cane, Grand Cane.....	4,842.79	
Hunter Magnolia, Mansfield.....	390.00	390.00
Kingston, Frierson.....	1,350.15	
Longstreet, Logansport.....	10,118.31	856.00
Maple Springs, Logansport.....		500.00
Mims Springs, Logansport.....		
Mt Olivet, Logansport.....	15,539.00	1,815.00
Old Union, Mansfield.....		500.00
Pelican, Pelican.....	6,815.00	2,200.00
Salem, Stonewall.....	43,909.05	2,470.00
Shiloh, Keatchie.....	11,936.00	8,000.00
Southside, Mansfield.....	500.00	3,150.00
Wallace, Pelican.....	34,226.67	9,750.00
Wood Springs, Grand Cane.....	1,750.00	970.00

Eastern Louisiana Association	CP 2025	LBC Causes*
Agape', Denham Springs.....		
Amite, Denham Springs.....	14,200.00	1,731.00
Bethel, Livingston.....		
Carroll, Walker.....	3,527.11	
Central, Gonzales.....		
Christ's Community, Denham Springs.....	17,819.00	100.00
Colyell, Livingston.....	21,069.90	
Community Church, Springfield.....		
Comunidad de Cristo, Denham Springs.....		
Don Avenue, Denham Springs.....	24,098.08	8,500.00
Emmanuel, Denham Springs.....	275.00	
First, Denham Springs.....	139,994.68	3,210.00
First, French Settlement.....	5,962.00	793.50
First, Head Of Island.....	1,546.84	
First, Holden.....	7,184.13	805.00
First, Livingston.....	7,000.00	13,914.30
Grace Covenant, Denham Springs.....	5,700.00	
Gray's Creek, Denham Springs.....	9,086.00	833.00
Greater Third Zion, Maurepas.....		
Hebron, Denham Springs.....	26,777.13	500.00
Judson, Walker.....	55,996.45	13,437.51
Live Oak, Denham Springs.....	26,953.56	1,026.86
Macedonia, Holden.....	900.00	1,099.42
Magnolia, Holden.....	3,600.00	1,031.00
Maurepas, Maurepas.....		
Midway, Livingston.....		
New Bethlehem, Denham Springs.....	900.00	
Northside, Denham Springs.....	9,518.29	1,345.62
Pine Grove, Livingston.....	40,065.00	4,816.86
Red Oak, Livingston.....	1,100.00	2,276.00
River Of Life Worship Center, Port Vincent.....		
Riverside, Denham Springs.....		7,165.52
Salem, Walker.....		
Satsuma, Livingston.....	22,287.09	2,604.00
South Walker, Denham Springs.....	593.27	1,054.42
Southside, Denham Springs.....	6,759.00	800.00
The New Beginnings, Walker.....	305.00	25.00
The Way Church, Denham Springs.....	1,400.00	
The Way Church, Livingston.....		
Victory, Walker.....	13,237.80	
Walker, Walker.....	54,845.87	1,902.60
Watson, Watson.....	27,993.09	1,211.00
Wholly Ground, Walker.....	300.00	200.00

Evangeline Association	CP 2025	LBC Causes*
Bethel Korean, Lafayette.....	600.00	240.00
Calvary, Lafayette.....	6,175.16	225.00
Church Acadiana, Lafayette.....	3,600.00	1,100.00
Community, Lafayette.....	7,164.01	685.00
Coteau Holmes, Saint Martinville.....		
El Renuevo, Lafayette.....	4,602.00	397.00
Erath, Erath.....	540.00	
Esther, Kaplan.....	688.00	
First Lydia, New Iberia.....		
First, Abbeville.....	750.00	
First, Broussard.....	14,581.23	391.00
First, Carencro.....	1,363.14	2,156.00
First, Delcambre.....	2,587.00	215.00
First, Jeanerette.....	152.37	600.01
First, Lafayette.....	662,016.47	16,556.07
First, Milton.....		
First, New Iberia.....	14,488.18	250.00
First, Scott.....	712.59	731.00
First, Youngsville.....	8,879.85	1,812.00
Highland Laotian, New Iberia.....	2,968.00	
Highland, New Iberia.....	98,060.99	4,241.00
Iglesia Nueva Vida, New Iberia.....	2,915.50	
Jenkins Memorial, St Martinville.....	4,308.04	540.00
Kaplan, Kaplan.....	450.00	220.00
Lafayette Korean, Lafayette.....	1,200.00	230.00
Lakefront Community, St Martinville.....	439.62	
Lighthouse Missionary, Abbeville.....		
Lighthouse Missionary, Franklin.....	1,300.00	600.00
Lighthouse, Lafayette.....	650.00	50.00
Loreauville, Loreauville.....	3,588.52	270.00
New Hope, St Martinville.....		
Parks, Parks.....	2,687.00	165.00
St James, Lafayette.....		

Teche, Breaux Bridge.....	4,368.51
The Bridge Fellowship, Breaux Bridge.....	1,762.98
The Open Door, Lafayette.....	1,811.24
Trinity, New Iberia.....	5,703.76
Vatican, Cankton.....	16,511.17
Westside, New Iberia.....	660.00
Youngsville Community, Youngsville.....	1,100.00

Gulf Coast Association	CP 2025	LBC Causes*
Bayou L'Ourse, Bayou L'Ourse.....		
Bayou Vista, Morgan City.....	16,099.96	
Belle River, Pierre Part.....	1,558.26	
Calvary Spanish, Morgan City.....		
Cypremort Point, Franklin.....	2,586.16	
First, Franklin.....		
First, Morgan City.....	17,509.96	
First, Patterson.....	3,311.50	
Immanuel, Morgan City.....	4,867.00	
Little Pass, Charenton.....	9,199.35	
Myette Point, Franklin.....	5,132.20	
Redeemed Life, Patterson.....	6,472.44	
Unity 1, Franklin.....		

LaSalle Association	CP 2025	LBC Causes*
Aimoch, Olla.....		
Calvary Heights, Jena.....		
Crossroads, Jena.....	2,658.54	
Eastvue, Jena.....	609.46	
Ebenezer, Trout.....	7,271.34	
Fellowship, Trout.....	18,775.12	
First Mt Nebo, Jena.....	11,777.09	
First, Jena.....	14,400.00	
First, Olla.....	20,283.00	
First, Tullos.....		
First, Urania.....		
Good Pine, Jena.....		
Hurricane Creek, Jena.....		
Magnolia, Jena.....	240.00	
Midway, Jena.....	3,015.15	
Mt Sinai, Jena.....		
Oak Ridge, Jena.....		
Pine Grove, Jena.....		
Pinehill, Olla.....	500.00	
Pleasant Hill, Jena.....	3,711.00	
Pleasant Ridge, Olla.....		
Pritchard, Jonesville.....	28,544.00	
Rosefield, Grayson.....	14,155.41	
Searcy, Trout.....	47,249.33	
Summersville, Olla.....	50.00	
Temple, Jena.....	1,966.00	
Victory, Jena.....	300.00	
Zenoria, Georgetown.....		

Louisiana Association	CP 2025	LBC Causes*
Bayou Des Glaises, Moreauville.....		
Bayou Jack, Plaquemine.....		
Bayou Rouge, Evergreen.....	3,405.00	
Beulah, Cheneyville.....	6,685.00	
Big Cane, Morrow.....	10,363.95	
Calvary, Bayou Chicot.....		
Centerville, St Landry.....	800.00	
Clearview of Big Bend, Moreauville.....	150.00	
Eola, Bunkie.....	1,009.28	
Fifth Ward, Marksville.....	2,831.03	
First Lone Pine, St Landry.....	12,278.70	
First, Bunkie.....	8,400.00	
First, Dupont.....		
First, Melville.....	1,331.05	
Grace Community Lighthouse, Krotz Springs.....	600.00	
Grace Community, Lettsworth.....	590.00	
Hessmer, Hessmer.....	10,513.68	
Life Point Community, Mansura.....	3,250.00	
Marksville, Marksville.....		
Moreauville Community, Moreauville.....		
Morrow, Morrow.....	1,023.82	
Point of Life Comm., Plaquemine.....	2,181.66	
Red River Community, Marksville.....	550.00	
Refuge, Echo.....		
St James, Bunkie.....	200.00	
St Landry, Saint Landry.....	1,097.84	
The Church at Marksville.....	1,961.88	

Madison Association	CP 2025	LBC Causes*
First Waverly, Delhi.....	21,566.86	
First, Tallulah.....	28,828.00	
Mound, Tallulah.....	600.00	
New Hope, Delhi.....	8,612.74	
Parkview, Tallulah.....	8,008.86	
Warsaw, Delhi.....	3,314.11	
Willow Bayou, Tallulah.....		

Morehouse Association	CP 2025	LBC Causes*
Bethel, Bastrop.....		11,111.11
Bonita Road, Bastrop.....	83,015.37	
Bonita Road, Mer Rouge.....	25,156.47	
Bonita, Bonita.....	750.00	
Cherry Ridge, Bastrop.....	33,726.05	
Faith, Bastrop.....		
First, Bastrop.....	43,910.36	
Greenacres, Bastrop.....	8,119.81	
Horseshoe, Mer Rouge.....	1,477.00	
New Friendship, Bastrop.....		
New Hope, Jones.....		
Oak Hill, Bastrop.....	6,618.79	
Oak Ridge, Oak Ridge.....	1,500.00	
Pine Grove, Bastrop.....		
Twin Oaks, Bastrop.....	2,953.67	

*LBC Causes include the Georgia Barnette Louisiana Missions Offering

Mt. Olive Association	CP 2025	LBC Causes*
Amiable, Glenmora		
Beaver Creek, Oakdale	1,072.00	
Bethany, Oakdale		
Calcasieu, Glenmora	1,917.33	95.00
Calvary, Forest Hill		
Cherrywinche Bethel, Glenmora		765.00
Cornerstone, Oakdale	1,000.00	400.00
Davis Crossing, Glenmora		
Elizabeth, Elizabeth	5,765.49	200.00
Elwood, Forest Hill	43,642.86	4,808.72
Emmanuel, Oakdale	8,865.27	220.00
First, Oakdale	300.00	
First, Pine Prairie	21,911.27	1,410.64
Forest Hill, Forest Hill	4,605.27	120.00
Freedom, Pitkin	1,200.00	860.00
Friendship, Pine Prairie		
Glenmora, Glenmora	35,657.65	5,180.00
Gospel, Glenmora	3,479.00	548.00
Harmony, Glenmora	12,227.73	1,255.00
Hopewell, Pitkin	2,345.00	
Humble, Pitkin	1,100.00	
Lake Cove, Turkey Creek	750.00	
Lone Star, Hinston	125.00	
Long Leaf, Longleaf	550.00	
Mt Hope, Oakdale	954.33	6,759.17
New Hope, Elmer	600.00	3,810.00
New Sunrise, Otis		
Oak Hill Community, Oakdale	189.20	
Oberlin, Oberlin	4,567.00	521.00
Occupy One, Pitkin	585.60	
Peniel, Glenmora	1,099.00	2,198.00
Pine Grove, Elizabeth		
Pine Ridge, Melder	4,850.00	
Pisgah, Forest Hill		985.00
St. Matthew, Oakdale		110.00
Trinity, Oakdale	8,244.47	1,110.00
Trinity, Turkey Creek	9,295.53	45.00
Union Hill, Glenmora		
Westport Friendship, Pitkin		

Natchitoches Association	CP 2025	LBC Causes*
Ashland, Ashland	3,995.54	
Bay Springs, Chopin	3,462.08	
Bellwood, Provencal		
Briarwood, Saline	250.00	
Calvary, Natchitoches	6,144.13	390.00
Central, Robeline		20.00
Christian Harmony, Natchitoches	629.95	
Clarence, Natchitoches	8,152.00	600.00
Coldwater, Natchitoches	1,200.00	210.00
Creston, Saline		
Cross Roads, Marthaville		863.43
Cypress, Natchitoches		850.00
Emmanuel, Natchitoches	1,741.29	2,224.30
First, Marthaville	2,379.00	
First, Natchitoches	58,368.70	7,897.00
First, Provencal	4,950.37	735.00
First, Robeline		3,394.84
Good Hope, Cypress		
Gorum, Gorum	834.44	
Grace, Cloutierville		
Grand Ecore Road, Natchitoches	295.34	
Harmony, Provencal	147.64	147.64
Kisatchie, Provencal		
Old Bethel, Natchitoches	711.91	250.00
Trinity, Natchitoches	5,845.81	1,005.00
United, Campti	249.96	
Westside en Espanol, Natchitoches		
Westside, Natchitoches	60,714.02	

New Orleans Baptist Association	CP 2025	LBC Causes*
Airline, Metairie		
Arabic Bible, New Orleans	900.00	
Barataria, Lafitte		
Believer's Temple of Faith, New Orleans	1,650.00	
Bethlehem Missionary, Reserve		
Bridge City, Bridge City	4,935.00	
Bridgedale Community, Metairie		
Calvary Chapel of New Orleans		
Calvary East, New Orleans	80.00	
Calvary Korean, New Orleans		
Calvary, New Orleans		
Canal Street:Mosaic Community, New Orleans	1,960.04	
Carrollton Avenue, New Orleans		
Celebration Campus, Kenner		
Celebration Church (SBC), Metairie	54,000.00	
Celebration River Parishes, LaPlace		
Celebration St Bernard, Arabi		
Celebration Westbank, Harvey		
Celebration, Lower St. Bernard		
Centered Church, New Orleans	150.00	200.00
Christ, Harvey	8,591.11	
Christian Fellowship Cathedral, New Orleans		
Christian Light, New Orleans		
Church of Shiloh, New Orleans		
City Life Church, New Orleans	3,600.00	
City of Hope, Hahnville		
Coliseum Place, River Ridge	5,000.00	800.00
Comunidad Cristiana Getsemani, New Orleans		
Conexion Calvario, New Orleans		
Connect Church, Algiers	8,326.91	
Connect International, New Orleans	600.00	
Cosmopolitan Evangelistic, New Orleans		
Crescent City Rock, New Orleans	250.00	
Cross Community, Marrero	2,856.67	
Delacroix Hope, St Bernard	1,409.86	50.00
Deliverance, New Orleans		



WHAT IS THE COOPERATIVE PROGRAM?

CP is more than a program. It's a direction that moves us toward fulfilling God's Great Commission. It's a commitment to do our part: every church and every church member praying, giving and going.

WHO DOES IT IMPACT?

CP impacts the lost through evangelistic events including training, camps, media outreach, church planting and more.

CP impacts the saved by equipping pastors, missionaries and other ministry/lay leaders.

CP impacts the hurting through compassion ministries including food pantries, thrift stores, job training, disaster relief and other efforts.



Visit **LouisianaBaptists.org/CP** for more information and resources.

*LBC Causes include the Georgia Barnette Louisiana Missions Offering

6

COOPERATIVEPROGRAM

Eagle Point, New Orleans		
Edgewater, New Orleans	12,520.12	615.50
Emmanuel Spanish, Kenner.....	1,125.00	
Epiphany Missionary, New Orleans	711.63	332.00
Evangelistic, New Orleans		
Faith & Glory, New Orleans		
Faith Church, New Orleans		
Faith Is The Victory, Harvey	2,400.00	300.00
Family Church, Kenner.....	2,000.00	900.00
First Haitian, Gretna	4,362.78	
First Korean, Metairie		
First Spanish American, New Orleans	3,300.00	1,000.00
First, Avondale	3,300.33	306.63
First, Belle Chasse.....	25,549.15	3,527.56
First, Chalmette.....		1,500.00
First, Destrehan.....		
First, Gretna.....	4,434.14	613.00
First, Harahan.....	1,200.00	200.00
First, Kenner	59,786.40	
First, LaPlace.....	15,102.18	1,000.00
First, Luling.....	1,250.00	3,938.78
First, Marrero	12,431.88	862.00
First, New Orleans.....	198,595.54	0.00
First, Norco.....	9,740.66	1,360.00
First, Venice.....		
First, Waggaman		
First, Westwego	250.00	
Franklin Avenue, New Orleans.....	62,500.00	
Free Mission, New Orleans	540.00	
Garden City, New Orleans		
Gentilly, New Orleans	7,000.00	500.00
Getsemani Hispanic, New Orleans.....	700.00	340.00
Good News, Destrehan.....		307.00
Good Shepherd Hispanic, Metairie	6,500.00	1,461.00
Grace Community, New Orleans		
GracePoint, Destrehan.....		
Gracia & Restauracion, Kenner	1,800.00	
Greater New Jerusalem, New Orleans		
Greater St Peter, New Orleans		
Gretna Covenant, Gretna.....		
Hahnville, Hahnville.....		
Harvest, New Orleans	3,797.92	759.59
Holy Anointed House of Prayer, New Orleans.....	1,100.00	
Hope Fellowship, New Orleans.....		
Horeb Hispanic, Chalmette	3,000.00	1,200.00
Horeb, Marrero		
Iglesia Amistad.....		
Iglesia Bautista Bethel, Kenner	250.00	300.00
Iglesia Bautista Horeb, Gretna	6,000.00	1,500.00
Iglesia Celebration, Metairie		
Iglesia Celebration, Westbank		
Iglesia Cristiana Filadelfia, Metairie		
Immanuel Community, New Orleans.....	6,900.00	550.00
Irish Channel, New Orleans	990.00	
Jesucristo Es El Camino, Metairie		
Korean Agape, Marrero		
La Vina, Westwego		
Lakeshore, New Orleans.....	13,911.56	
LaVina, Kenner	1,100.00	
Level Ground, New Orleans.....		
Lighthouse, New Orleans		
Living Water, La Place.....		
Loving Faith, Gretna.....		
Loving Four, New Orleans.....		
Lugar Seguro, Jefferson	1,928.00	207.96
Manna, New Orleans	88.00	
Maranatha, La Place	2,600.00	300.00
Memorial, Metairie	6,551.39	
Metairie Church		
Metairie Korean, Metairie		
Metairie, Metairie	40,193.58	
Narrative, New Orleans		
New Hope Community, Kenner	685.00	200.00
New Hope East Campus, New Orleans.....	600.00	
New Life Spanish, Marrero.....	1,650.00	400.00
New Life Worship, New Orleans.....		
New Orleans Chinese Church, New Orleans		
New Orleans Chinese, Kenner	4,400.00	
New Pilgrim, Reserve		
New Salem, New Orleans	1,800.00	
New Testament Bible, Harvey.....	1,025.89	350.00
New Vision, St Rose.....		
Next Level in Christ, New Orleans		
Nola, New Orleans		
Parkview, Metairie	14,642.86	214.50
Pleasant Hill, New Orleans		
Port Sulphur, Port Sulphur.....		
Potter's Wheel, Harvey		
Poydras, Saint Bernard.....	7,808.16	394.14
Promise Church, New Orleans.....		
Rebuild, New Orleans		
Refuge, New Orleans	240.00	
Rio Vista, Jefferson	1,713.70	525.00
Riverside, River Ridge	21,967.06	
Safe Place, Jefferson	534.00	49.93
Shiloh Christian Fellowship, New Orleans.....	450.00	
St Bernard, Chalmette.....	2,705.68	
St Joseph Free, New Orleans		
St Rose Community, St. Rose	15,097.87	
Still Water Southeast, Marrero		
Still Water, Westbank		
Strength For Today, New Orleans		
Suburban, New Orleans	600.00	
The Church in Michoud, New Orleans		
The Forest, New Orleans		
Urban Family, New Orleans		
Vietnamese, New Orleans		
Vintage, New Orleans	14,400.00	
West Marrero, Marrero		

West St Charles, Boutte.....	5,011.00	2,645.39
Williams Boulevard, Kenner	37,000.00	

North Central Baptist Association

CP 2025

LBC Causes*

Ansley, Quitman		
Atlanta, Atlanta.....	250.00	595.00
Beech Creek, Tullos		50.00
Beech Springs, Quitman.....	13,595.00	575.00
Bethlehem, Winnfield.....	940.00	700.00
Big Creek, Winnfield		
Calvary, Tullos	6,376.43	1,065.00
Caney Lake, Chatham	936.76	
Center Point, Jonesboro	4,513.21	585.00
Corinth, Winnfield		465.00
Crews New Salem, Montgomery.....		
Cypress Creek, Dodson.....		
Dodson First, Dodson		
East Winnfield, Winnfield.....	3,708.81	
Ebenezer, Jonesboro	19,550.11	3,851.55
Fellowship, Quitman		677.00
First, Calvin.....		1,624.16
First, Chatham.....		
First, Jonesboro	3,607.40	7,041.00
First, Winnfield	67,788.27	8,030.00
Goldonna, Goldonna.....		
Grace, Goldonna		115.00
Hodge, Hodge.....		3,032.26
Hurricane Creek, Dodson	1,200.00	
Lakeside, Winnfield.....	6,839.00	25.00
Laurel Heights, Winnfield.....	300.00	500.00
McDonald Memorial, Jonesboro	9,476.23	1,790.39
Midway Community, Jonesboro.....		250.00
Mill Creek, Goldonna.....		
Mt Olive, Eros		
New Jerusalem, Winnfield.....	3,564.00	400.00
Pleasant Hill, Winnfield		
Quitman, Quitman	20,167.77	450.00
Sardis, Winnfield		
Siloam, Dodson	7,640.00	478.00
South Winnfield, Winnfield	29,601.52	4,563.00
Southside, Jonesboro	359.25	
Springhill, Jonesboro	2,934.95	713.00
Sweetwater, Quitman	50,004.00	8,784.00
Trinity, Winnfield		
Union Hill, Montgomery	2,396.60	
United, Winnfield	1,200.00	1,200.00
Vernon, Ruston.....	5,915.32	280.00
Walnut Ridge, Quitman		682.00
Welcome Home, Dodson.....	7,403.91	9,334.00
Weston, Jonesboro	650.00	
Yankee Springs, Goldonna.....		
Zion Hill, Winnfield	2,301.00	195.00

North Sabine Association

CP 2025

LBC Causes*

Aimwell, Zwolle	15,746.63	2,142.00
Bethsadia, Many		
Calvary, Many	19,827.96	337.00
Carson, Zwolle		500.00
Cedar Grove, Robeline.....	756.75	
Emmanuel, Pleasant Hill		
Fellowship, Converse.....	1,651.00	1,091.50
First Ft Jesup, Many	396.24	452.00
First, Converse	1,300.00	2,975.00
First, Pleasant Hill.....		
First, Zwolle	16,654.17	2,345.61
Friendship, Many.....	43.60	
Lakeview, Noble		
Memorial, Zwolle.....		
Midway, Converse	263.84	301.00
Mt Zion First, Many		
Noble, Noble		
Old Pisgah, Marthaville		
Pilgrims Rest, Many		
San Patricio, Converse	457.32	
Shady Grove, Noble		
Spring Ridge, Pleasant Hill	1,341.00	560.00
Union Springs, Converse	1,167.00	
Union, Belmont		400.00

Northeast Louisiana Association

CP 2025

LBC Causes*

Bayou Oaks, Monroe.....	600.00	
Berean, Monroe		
Bethel, West Monroe		
Bosco, Monroe		
Calvary, Monroe		
Cedar Crest, West Monroe	193,986.94	73,124.12
Center Point, West Monroe.....		
Cheniere, West Monroe	11,475.21	1,235.00
ChristWay, Monroe		
Clark Springs, Eros.....	1,351.81	1,215.61
Community, West Monroe	20,883.20	1,981.00
Cristo el Rey, West Monroe.....		352.00
Cypress, West Monroe	10,360.20	1,882.00
Emmanuel, Monroe	3,138.86	660.00
Fair Park at Good Hope, West Monroe		
Fair Park, West Monroe	247,401.71	10,699.90
First West, Calhoun.....		
First West, West Monroe.....	110,000.00	12,045.00
First, Calhoun	23,317.85	323.25
First, Monroe	73,998.29	495.00
First, Sterlington.....	37,539.16	
Grace Covenant, West Monroe		
Grace, Monroe	18,424.09	1,375.00
Greater New Antioch, Monroe	825.00	
Highland Park, Monroe		390.00
Highland, West Monroe	41,425.35	3,368.00
Iglesia Emmanuel, West Monroe	1,086.07	
Indian Village Community, Calhoun.....		

Lakeshore, Monroe	34,026.75	2,587.00
Liberty, Calhoun		640.00
Lighthouse, Monroe		
Loch Arbor, Monroe		500.00
McClendon, West Monroe	153,496.11	6,377.55
Memorial, Monroe		1,813.28
Mt Vernon, West Monroe	43,446.78	445.00
New Chapel Hill, West Monroe.....	39,342.05	9,996.00
New Direction, Monroe	100.00	
New Light, Monroe.....	5,512.88	680.00
North Church, Bastrop		
North Hills, West Monroe	2,800.00	
North LA Cowboy Church, West Monroe	1,765.00	
North Monroe, Monroe	99,999.96	265.00
Oak Grove, Eros	30,523.05	735.00
Ouachita, West Monroe	17,000.00	
Parkview, Monroe	19,494.00	2,190.00
Pine Hills, West Monroe		
Rescue Community, West Monroe	7,995.52	25.00
Ridge Avenue, West Monroe	7,028.19	590.00
Riverview, West Monroe	291.00	135.00
Swartz First Baptist	5,584.11	
The Anchor, Monroe		
The Crossing, West Monroe	1,011.34	
The Well, Monroe	200.00	200.00
Victory, Monroe	14,400.00	1,700.00
Watson, West Monroe	4,800.00	100.00

Northshore Baptist Association

CP 2025

LBC Causes*

Agua Viva, Pearl River		
Antioch, Tickfaw		250.00
Bayou, Slidell	8,974.00	256.00
Bedico, Ponchatoula	64,402.00	3,546.00
Bethlehem, Albany	100.00	10,434.76
Blood River, Albany	20,008.20	1,830.00
Bogue Falaya, Folsom.....	2,146.32	185.00
Calvary, Slidell	472.10	
Celebration Church, Mandeville	5,000.00	
Celebration, Slidell		
Christ Community, Covington		
Coburn, Hammond		
Collins Boulevard, Covington.....	375.00	270.00
Countryside, Tickfaw		
Covenant, Slidell	725.00	
Creskide, Loranger		655.00
Cristo para Todos, Natalbany.....		
Cross Brand Cowboy,Loranger	175.00	1,563.18
Crossgate First, Robert		
Crossroads, Hammond	6,054.96	1,740.00
Ebenezer, Hammond	18,677.61	574.00
Emmaus, Tickfaw	600.00	670.00
First, Albany	11,314.99	1,739.25
First, Covington	461,363.70	42,122.58
First, Folsom	25,594.69	3,037.73
First, Hammond	5,150.31	
First, Independence		
First, Madisonville		
First, Mandeville	66,921.26	1,822.00
First, Pearl River	29,668.94	2,152.16
First, Ponchatoula	62,819.41	10,299.86
First, Slidell	88,700.72	7,058.60
First, Springfield	7,555.93	371.04
First, Tickfaw	1,408.53	
French Corner, Ponchatoula	5,853.10	461.00
Grace Community, Mandeville.....	2,610.00	
Grace Fellowship, Tickfaw		1,911.18
Grace Memorial, Slidell	80,109.77	5,601.95
Hebron, Bush	1,486.26	233.00
Hope, Bush.....		
Iglesia Bautista Buenas Nuevas, Slidell	3,758.80	693.00
Iglesia Celebration, Mandeville		
Iglesia Cristo Redentor, Mandeville	2,400.00	
Immanuel, Hammond	4,364.50	685.00
Jerusalem, Hammond	17,292.87	
Killian First, Springfield.....		
Lee Hill, Folsom		
Lee Valley, Loranger		
Life Church, Mandeville		
Lighthouse, Independence.....	13,267.90	
Loranger, Loranger	22,914.72	
Manchac, Akers		
Midway, Ponchatoula.....		600.00
Millville, Ponchatoula	664.52	85.00
Mt Calvary, Independence.....		145.94
Natalbany, Natalbany	1,508.52	
New Beginning, Bush	3,000.00	630.00
New Beulah, Hammond.....	6,294.85	768.72
New Hope, Independence.....		
New Life Community, Covington	2,118.00	40.00
New Zion, Covington		45,136.31
Northshore, Slidell.....	37,921.00	
Northside, Slidell	3,960.79	400.00
Old Zion Hill, Independence		13,195.71
Red Bluff, Folsom	25,164.93	1,861.09
Redemption Christian Center, Hammond		
Redemption, Lacombe	43,955.77	1,864.96
Restoration Community, Mandeville.....		
Ridge Memorial, Slidell.....		
River Fellowship, Hammond	1,227.24	
River Road, Hammond		
Serenity, Tickfaw	1,954.55	
Springville, Livingston	2,894.30	
St James, Madisonville		
Still Water, Hammond		
SweetWater, Abita Springs	10,885.91	1,710.00
Tammany Hills, Covington	4,539.05	301.01
The Bridge Church, Madisonville.....	5,200.00	200.00
Thompson Road, Slidell	16,643.40	20.00
Trinity, Hammond	35,282.00	6,197.00

*LBC Causes include the Georgia Barnette Louisiana Missions Offering

Victory, Hammond		
Wardline, Hammond		
Westside, Ponchatoula	29,818.39	1,630.00
Woodhaven, Tickfaw	704.00	
Woodland Park, Hammond	59,988.67	3,706.36
Woodland, Springfield		
Northwest Louisiana Association CP 2025 LBC Causes*		
3:18 Church, Shreveport	705.00	100.00
Airline, Bossier City	46,000.00	56.33
Ban Suk Korean, Bossier City	6,600.00	6,000.00
Baptist Bible Fellowship, Shreveport	6,000.00	300.00
Barksdale, Bossier City	20,400.07	1,100.00
Belcher, Belcher	14,372.56	
Bellaire South, Bossier City		
Bellaire, Bossier City	6,000.00	
Belle Park, Haughton	18,032.77	205.00
Bellevue Road, Haughton		
Bethany, Bethany	7,304.39	1,770.00
Bethesda, Shreveport		
Beulah Land, Haughton		
Broadacres, Shreveport		
Broadmoor Espanol, Bossier		
Broadmoor, Shreveport	512,200.30	22,941.04
Brookwood, Shreveport	82,650.86	9,756.12
Caddo Prairie, Hosston	1,582.59	
Calvary, Shreveport	7,304.20	
Chinese, Shreveport	2,200.00	
Colquitt, Vivian	5,265.00	
Countryside, Keithville	1,200.00	
Covenant, Shreveport		
Cross Point, Benton	5,925.55	
Cypress South Shreveport		
Cypress, Benton	298,536.47	2,150.00
Dixie Garden, Shreveport		
Eastwood, Haughton	21,000.93	7,107.09
Ellerbe, Shreveport	142,881.07	3,925.00
Elm Grove, Bossier City	7,917.71	1,176.00
Emmanuel, Shreveport	54,394.06	4,880.31
Faith Baptist Fellowship, Bossier City		
Fellowship, Benton		
Ferry Lake, Oil City	538.05	345.57
First Zo, Bossier City	3,930.74	
First, Benton	17,353.00	3,001.00
First, Blanchard	46,093.41	3,626.00
First, Bossier City		
First, Greenwood	1,883.33	400.00
First, Haughton	358,253.20	11,151.80
First, Keithville	65,975.00	2,240.00
First, Oil City	1,200.00	100.00
First, Princeton	7,112.60	
First, Shreveport	16,331.76	9,872.83
First, Vivian	33,155.93	
Ford Park, Shreveport	8,586.41	1,700.00
Freedom Church, Bossier City		
Gethsemane, Shreveport		
Gospel Light, Shreveport		
Grace at Cross Lake, Shreveport	2,100.00	750.00
Grace Temple, Shreveport	200.00	
Grawood, Keithville		87.00
Gray, Jefferson (TX)	3,312.40	
Hana, Bossier City	600.00	
Haynes Avenue, Shreveport	17,222.99	6,790.00
Heritage, Shreveport		
House of Hope, Shreveport		
Ida, Ida		4,532.67
Iglesia Bautista del Calvario, Shreveport	3,015.70	
Iglesia Bautista Ebenezer, Shreveport		
Kingston Road, Shreveport		
Koran, Haughton		10,355.00
Lakeview, Shreveport		225.00
Liberty, Shreveport		
Lighthouse, Shreveport		
Memorial Baptist Chapel, Elm Grove		
Mission Point, Stonewall	9,100.75	
Mooringsport, Mooringsport	13,079.79	1,378.00
Mt Gilead, Vivian		1,434.24
Narrow Gate, Vivian	5,009.19	
New Beginning Missionary, Bossier City		
New Bethel, Rocky Mount		
New Birth, Shreveport		
New Elizabeth Missionary, Shreveport		
New Wine, Shreveport		
New Zion, Bossier		
Norris Ferry, Shreveport	182,557.95	
North Keithville, Keithville		
North Shreve, Shreveport		14,246.06
Northstar, Shreveport		
Northwoods, Shreveport		
Oak Hill, Plain Dealing	1,109.65	570.00
Open Road Fellowship, Haughton	1,055.00	
Pilgrim Home, Benton		
Pinecroft, Shreveport		145.00
Plain Dealing, Plain Dealing	28,305.04	
Providence Road, Shreveport	2,299.92	535.00
Red River, Benton	9,496.74	565.00
Redeemer Community, Keithville	650.00	
Rodessa, Rodessa		
Rose Park, Shreveport	49,184.33	
Salem, Plain Dealing		1,989.97
South Bossier, Bossier City	29,258.74	
Springs of Grace, Shreveport	1,980.00	
St James Missionary, Shreveport		
Summer Grove Espanol, Shreveport	1,923.60	
Summer Grove, Shreveport	132,191.40	4,353.10
The Covenant Church, Benton	4,800.00	
Tower, Mooringsport		



WHERE DOES IT GO?

Louisiana Baptist CP Allocations:

- 41.83%
- Louisiana Baptists (State Missions Services)
- 37.13%
- SBC
- 20.42%
- Louisiana Baptist Entities
- 0.62%
- Louisiana Baptist Convention Operating

Southern Baptist CP Allocations:

- 73.20%
- World Missions
- 22.16%
- Theological Education
- 2.99%
- Executive Committee & SBC Operating Budget
- 1.65%
- Christian Ethics & Religious Liberty

THE ULTIMATE QUESTION

How can you help? Literally billions of souls, in Louisiana and beyond, are heading towards a Christ-less eternity. Together, we can give them an opportunity to respond to the Gospel.



Visit LouisianaBaptists.org/CP for more information and resources.

*LBC Causes include the Georgia Barnette Louisiana Missions Offering

8 COOPERATIVEPROGRAM

Trees, Vivian	15,880.36	3,970.10
Trinity Heights, Shreveport	84,197.21	4,003.70
United Outreach, Shreveport	600.00	
Western Hills, Shreveport		
Westlake, Shreveport		737.00
Westwood, Keithville	1,770.00	895.00
Willow Point, Shreveport	2,067.67	
Woodland Hills, Shreveport		
Woodridge, Shreveport	74,126.67	11,917.07

Ouachita AssociationCP 2025LBC Causes*

Acme, Acme		
Aimwell, Aimwell		
Bird's Creek, Harrisonburg	2,455.75	150.00
Dunbarton, Ferriday		852.19
Evangeline, Wildsville	180.00	
Faith, Clayton	417.20	
First, Harrisonburg	34,976.63	1,378.00
First, Jonesville		3,065.00
First, Sicily Island	7,198.03	615.00
Grace, Jonesville	3,600.00	
Lake Lilly, Jonesville	2,214.16	225.00
Larto, Jonesville		
Lismore, Jonesville	1,328.30	1,654.29
Monterey First, Monterey	10,609.80	455.00
Mt Hermon, Jonesville		
New Era, Monterey	13,686.00	4,420.00
New Ouachita, Enterprise	22,087.00	2,260.00
Norris Hill, Sicily Island	160.00	
Oak Grove, Jonesville	6,243.01	390.00
Parhams, Jonesville	2,000.00	
Patton, Jonesville	375.00	170.00
Pine Hill, Sicily Island	3,000.00	
Pisgah, Jonesville	1,123.80	1,833.80
Pleasant Grove, Jonesville	1,000.00	1,001.00
Prosperity, Jonesville		
Standard, Olla		
Utility, Jonesville		
Wallace Ridge, Jonesville	600.00	240.00

Red River AssociationCP 2025LBC Causes*

Bethel, Coushatta		
Fairview, Coushatta	107,025.54	2,410.00
First, Coushatta	143,836.45	4,161.80
Harmon, Coushatta	200.00	200.00
Hickory Grove, Coushatta	600.00	
Liberty, Coushatta	1,572.00	513.00
Martin, Coushatta		
Mount Zion, Coushatta		
Open Door Fellowship, Coushatta	11,920.32	
Social Springs, Ringgold	8,631.25	345.00
Springhill, Ringgold	54,421.00	4,272.68
Union Hall, Coushatta		

Richland AssociationCP 2025LBC Causes*

Alto, Rayville	18,000.00	2,752.00
Antioch, Rayville	1,800.00	
Bethel, Rayville		
Bethlehem, Mangham	191.85	250.00
Boeuf River, Rayville		
Calvary, Mangham	8,356.49	700.00
Cedar, Archibald	250.00	2,474.30
Dunn, Delhi	6,685.00	1,466.00
Eastside, Rayville		250.00
First, Archibald	3,760.00	1,352.00
First, Delhi	28,400.00	2,295.00
First, Rayville	142,842.61	10,293.29
Hegwood, Epps		
Holly Ridge, Rayville		
Lone Cherry, Mangham		600.00
Mangham, Mangham	47,418.70	3,105.00
New Light, Mangham	1,992.00	250.00
Newton, Delhi		
Rayville Baptist Christian, Rayville		
Robinson, Delhi		
Start, Rayville	4,584.00	145.00
Welcome Home, Hebert	3,935.29	500.96
West New Home, Rayville	6,178.70	380.00
Westside Of Delhi, Delhi		
Woodlawn, Rayville	1,250.00	1,250.00
Zebedee, Rayville		

Sabine AssociationCP 2025LBC Causes*

Alford Heights, Many	2,444.00	120.00
Antioch, Florien	4,732.00	4,732.00
Beulah, Many	10,826.70	
Christian, Florien	76.75	
Ebenezer, Florien		
First, Florien	2,778.27	
First, Hornbeck	34,619.34	2,125.00
First, Many	27,549.53	5,316.00
Fisher, Fisher		
Harmony Cove, Florien	379.38	
Lakeside, Many	2,748.15	200.00
Little Flock, Many		
Middle Creek, Florien		
Mt Carmel, Florien	21,053.98	4,679.00
Oak Hill, Many	305.30	2,195.09
Pine Grove, Florien	3,675.00	
Pisgah, Florien		1,500.96
Plainview, Florien	2,724.86	383.00
Pleasant Hill, Florien	3,181.89	
Siloam, Many	3,705.26	
Toro, Florien		
Trinity, Many		
Warren, Many		
Zion Hill, Negreet	5,097.72	390.00

Two Rivers AssociationCP 2025LBC Causes*

Bethel, Kentwood	1,320.00	275.00
Chappapeela, Amite		
Community, Greensburg		
Cottage, Kentwood	650.00	
Crossroad Fellowship, Amite		
Darlington, Greensburg		
First, Amite	24,469.12	5,358.60
First, Greensburg	7,813.67	1,533.83
First, Kentwood	60,600.32	5,680.00
First, Roseland		
Friendship, Amite	2,344.56	225.48
Grangeville, Pine Grove		
Greenlaw, Kentwood	1,154.00	
Hillsdale, Amite	4,105.30	
Kedron, Amite	7,926.16	30.00
Lewiston, Kentwood		
Line Creek, Kentwood	15,025.34	
Montpelier, Montpelier	7,200.00	8,741.60
Mt Nebo, Roseland		
New Sharon, Husser	5,695.94	4,426.98
New Zion, Kentwood	13,096.59	3,152.50
Pleasant Hill, Pine Grove	1,800.00	
Red Bluff, Greensburg		200.00
Shady Grove, Amite		355.00
Spring Creek, Kentwood	34,093.96	2,040.00
Tangipahoa, Kentwood		5,816.86
Taylor Creek, Kentwood	5,253.00	

Vernon Baptist AssociationCP 2025LBC Causes*

Antioch, Slagle	1,375.00	1,674.00
Big Hammock, Leander		
Branded for Christ, Leesville	600.00	2,700.00
Calvary, Leesville		150.00
Canaan, Leesville	15,018.00	2,087.00
Castor, Leesville	75.00	
Comrade, Temple	507.00	
Cooper, Leesville	3,009.77	7,552.36
Crystal Springs, Anacoco		
East Leesville, Leesville	76,951.07	3,929.05
First, Anacoco	40,677.67	2,713.76
First, Leesville	4,605.00	8,313.21
First, Pitkin	2,381.65	299.92
Flactor, Leesville	6,479.23	400.00
Freedom Rest, Anacoco		100.00
Fullerton, Pitkin		250.00
Galilee, Evans	6,209.07	500.00
Good Hope, Anacoco	1,100.00	2,000.00
Gravel Hill, Pitkin	3,775.83	346.00
Laurel Hill, Leesville	1,200.00	560.00
Leesville Korean, Leesville	1,350.00	400.00
Mount Bethel, Leesville	600.00	
Mt Carmel, DeRidder	2,139.48	270.00
Mt Moriah, Hineston	4,725.00	825.00
Mt Olive, Pitkin		
New Birth, Leesville		
Oak Forest, Leesville	1,200.00	
Old Anacoco, Leesville	8,719.35	550.00
Pine Hill, Leesville	1,520.81	550.00
Pine Land, Mora		
Pisgah, Clifton		
Prewitts Chapel, Hornbeck	3,830.00	
Sandy Hill, Leesville		13,014.60
Silver Creek, Leesville		1,200.00
Simpson, Simpson	8,926.00	575.00
Slagle, Slagle	4,568.90	
Sunny Hill, Leesville		
The Way, Rosepine		

Washington AssociationCP 2025LBC Causes*

Angie, Angie	35,960.45	2,016.00
Bethel, Franklinton	11,797.44	455.93
Bogue Chitto Heights, Franklinton		
Bogue Chitto, Mount Hermon	11,044.00	811.75
Bonner Creek, Franklinton	2,622.81	110.00
Briarwood, Franklinton	3,281.00	1,025.00
Buenas Nuevas, Franklinton	88.51	
Clifton, Franklinton	11,481.91	5,112.91
Cornerstone, Bogalusa		
Enon, Franklinton	23,693.18	1,800.00
Evans Creek, Pearl River		1,792.81
Faith Church, Franklinton		
First, Bogalusa	19,342.18	390.00
First, Franklinton	85,155.61	5,182.00
First, Sun	1,500.00	
Hays Creek, Franklinton		300.00
Highland, Bogalusa	7,360.71	230.00
Hillcrest, Franklinton	18,080.06	1,456.09
Isabel, Bogalusa	1,210.18	230.00
Lee's Creek, Bogalusa	27,775.50	2,280.00
Main Street, Bogalusa		2,488.00
Memorial, Bogalusa	10,110.34	468.59
Monroe Street, Bogalusa	6,685.00	507.00
Mt Hermon, Mt Hermon	15,927.20	1,590.00
Mt Pisgah, Mount Hermon	250.00	425.00
Mt Pleasant, Bogalusa	600.00	
Nueva Vida en Cristo, Bogalusa	62.97	
Palestine, Bogalusa		
Pine First, Pine	14,684.43	480.00
Plainview, Bogalusa	10,620.32	1,970.00
Pleasant Hill, Bogalusa		
Springhill, Franklinton	1,466.00	560.00
Sunlight, Franklinton	12,794.20	7,957.02
Sunny Hill, Mount Hermon		
Superior Avenue, Bogalusa	21,720.42	
Thomas Baptist, Franklinton	2,375.00	
Trinity, Franklinton	5,056.73	415.00

Victory, Franklinton	1,193.44	493.23
Westside Emmanuel, Bogalusa	1,800.00	632.00

Webster Claiborne AssociationCP 2025LBC Causes*


Antioch, Minden		
Beech Springs, Minden	6,742.59	250.00
Bistineau, Heflin	6,279.66	7,464.50
Calvary, Homer	10,245.00	1,510.65
Calvary, Springhill	11,700.46	1,035.00
Central, Springhill	70,973.03	4,018.47
Emmanuel, Arcadia	13,045.00	1,551.00
Emmanuel, Minden	13,375.00	
FBC, Cotton Valley	4,037.37	464.00
Fellowship, Dubberly		
First, Doyline	2,532.64	50.00
First, Haynesville	41,333.43	2,764.00
First, Homer	19,898.12	3,885.00
First, Minden	109,658.17	3,705.83
First, Sibley		
Fryeburg, Dubberly	10,524.80	1,160.00
Germantown, Minden		
Hebron, Summerfield	960.00	240.00
Heflin, Heflin	22,302.09	2,190.00
Holly Springs, Homer		
Midway, Sarepta	1,281.26	
Mount Paran, Shongaloo	17,311.60	1,000.00
Mt Olive, Athens	3,300.00	
New Hope, Homer		
New Sarepta, Sarepta	9,750.00	2,873.10
North Acres, Minden	40,485.99	1,390.00
Old Union, Shongaloo	2,400.00	
Pilgrim's Rest, Doyline		
Pleasure Point, Homer	2,205.06	858.00
Rocky Springs, Lisbon	24,561.34	1,815.00
Ruple, Haynesville	767.75	485.00
Summerfield, Summerfield		
Temple, Springhill	300.00	95.00
Union Springs, Shongaloo		
Unity, Cotton Valley	3,575.00	774.00
West Lake, Doyline	5,495.86	1,424.00

William Wallace AssociationCP 2025LBC Causes*

Bethany of Baywood, Clinton		1,352.00
Bluff Creek, Clinton	30,557.00	1,615.00
Eastside, Zachary		680.00
Ethel, Ethel	15,060.67	1,530.00
Feliciana, Clinton		
First, Clinton		2,445.55
First, Jackson		6,144.47
First, Slaughter	14,712.00	2,760.00
First, St Francisville	1.04	23,289.21
First, Wilson	900.00	
Galilee, Zachary	29,727.04	3,339.70
Grace, Angola		
Milldale, Zachary		1,487.00
Mt Pleasant, Zachary		
Norwood, Norwood		7,336.33
Plank Road, Slaughter		330.00
Port Hudson, Jackson		2,000.00
Providence 1, Ethel		
Redwood, Slaughter	5,520.00	575.00
Sandy Creek, Pride		
Second, Jackson	2,432.78	825.00
Tunica Hills, Tunica		
Wakefield, Wakefield		

No AssociationCP 2025LBC Causes*

Canal Blvd Deaf, New Orleans		
Circle Church, Alexandria		
Circle, Baker		
Cross Creek Cowboy, Zachary	3,107.78	
CrossPoint, West Monroe	3,660.00	
Dixie, Sieper		375.00
Eastside, Ponchatoula		
Evergreen Missionary, Lake Charles		
FBC, Grand Isle		
Heart of Worship, Pineville	600.00	
Mount Zion, Sulphur		
Mt Bethel, Baton Rouge		
New Covenant, Baton Rouge		
New Hope, Slidell		
Pine Grove, Mora		
Pleasant View, Hornbeck		
Praise Temple, Shreveport		
Redeemer Church, Livingston		
Renew, Baton Rouge	1,500.00	
Scarlet Cord, St. James		
South Park, Leesville		
Temple of New Life, East Baton Rouge		
The Father's House, West Monroe		
The Lord's Church, Baton Rouge		
The Refuge, Shreveport	983.88	2,512.76
Unity, Opelousas	2,199.00	
Victory, Plaquemine	3,531.30	350.00



Visit LouisianaBaptists.org/CP
for more information and resources.

*LBC Causes include the Georgia Barnette Louisiana Missions Offering